

# Bus Information



2017

Updated March 2017

# Table of Contents

|   |           |
|---|-----------|
| <b>Introduction</b>   | <b>3</b>  |
| <b>Unity College Murraylands</b>                                  | <b>3</b>  |
| <b>Contracted Runs</b>  | <b>3</b>  |
| LinkSA Buses  | 3         |
| 1. Murray Bridge Northside  | 4         |
| 2. Murray Bridge Eastside   | 5         |
| 3. Murray Bridge Westside   | 6         |
| 4. Coonalpyn (via Meningie and Wellington)                        | 7         |
| 5. Culburra (via Coonalpyn, Coomandook and Tailem Bend)           | 8         |
| 6. Langhorne Creek (via Woodchester and Callington)               | 9         |
| 7. Mannum   | 10        |
| 8. Murrayville (via Pinnaroo, Lameroo and Tailem Bend)            | 11        |
| <b>DECD (Department for Education and Child Development) Runs</b> | <b>12</b> |
| DECD Bus Routes   | 12        |
| 1. Monarto Junction   | 13        |
| 2. Mypolonga / Wall Flat  | 14        |
| 3. Tepko / Mannum   | 15        |
| 4. Wellington   | 16        |
| 5. Brinkley   | 17        |
| 6. Montieth   | 18        |
| 7. Pompoota   | 19        |
| 8. Pallamana  | 20        |
| 9. Bow Hill   | 21        |
| <b>Safety Issues</b>  | <b>22</b> |
| Bushfire / Natural Disaster / Hazardous Incident                  | 22        |
| Seat Belts  | 22        |
| Murray Bridge Bus Behaviour Code                                  | 22        |
| Rationale   | 22        |
| Expectations of Students  | 22        |
| Expectations of Parents and Caregivers                            | 24        |
| Other Expectations  | 25        |
| <b>Unity College Spring Head</b>                                  | <b>26</b> |
| Unity College Spring Head Bus Information                         | 24        |
| Bus Zones   | 25        |
| Bus Fees  | 25        |
| Bus Schedules   | 25        |
| Absentees   | 25        |
| Bus Behaviour   | 25        |
| Unity College Spring Head Bus Routes                              | 26        |
| 1. Northern Zone  | 26        |
| 2. Southern Zone  | 27        |

# Introduction

Unity College proudly offers its educational program to families from all directions in the Murraylands region. Therefore the oversight and knowledge of bus runs and the safety of our students is of high importance to us.

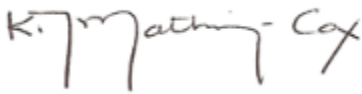
For each of the bus runs, together with a diagram of the region they service, contact details are listed under the main categories of supply.

Also included is a statement and the guidelines with regard to safety and expectations for students while travelling on a bus. It is also designed to alert students to the consequences should they fail to meet the guidelines.

We hope that this document will help your understanding of all the 'runs' and offer information to assist you in transporting your child/ren to and from school via bus.

For more detailed 'run specific' information, please contact the appropriate coordinator of the service.

With Christian greetings,



**Kaye Mathwin-Cox**  
Principal



**Phillip Zanker**  
Business Manager

# Unity College Murraylands Bus Services

## Contracted Runs

The PTD (Public Transport Division) controls the allocation of bus runs throughout the state. Our current contractor is LinkSA.

Fees for these runs are controlled by LinkSA (please contact them directly for current pricing). Payment is direct to the bus driver or the company, either by paying for an individual trip, a multi-trip (10 trips), or by purchasing a 4-week school pass.

To be able to access school buses, a pack is available from the school which includes a gold form which that needs to be stamped and signed at the school prior to travel.

## LinkSA Buses

- |                                     |                    |
|-------------------------------------|--------------------|
| 1. Murray Bridge Township Northside | 5. Culburra        |
| 2. Murray Bridge Township Eastside  | 6. Langhorne Creek |
| 3. Murray Bridge Township Westside  | 7. Mannum          |
| 4. Coonalpyn                        | 8. Murrayville     |

# 1. Murray Bridge Northside

| Northside Murray Bridge Township Service        |              |              |
|---|--------------|--------------|
| Location  | am (approx.) | pm (approx.) |
| MURRAY BRIDGE - Maurice Road                    | 7:50         | 4:15         |
| MURRAY BRIDGE NORTH - Bigmore Road              | 7:55         | 4:10         |
| MURRAY BRIDGE NORTH - Crn Nilpena Rd & Frahn Rd | 8:00         | 4:05         |
| MURRAY BRIDGE - Blackwood Ave & Thomas St       | 8:05         | 3:45#        |
| MURRAY BRIDGE - Cnr Doeke Rd & Lincoln Rd       | 8:15         | 3:55         |
| MURRAY BRIDGE - Maurice Rd near Dorset St       | 8:19         | 3:48         |
| MURRAY BRIDGE - Murray Bridge North PS          | 8.30#        | 3:40         |
| MURRAY BRIDGE - South School                    |              | 3.32#        |
| MURRAY BRIDGE - Murray Bridge High School       | 8:38#        | 3:30         |
| MURRAY BRIDGE - Unity College – Senior Campus   | 8:43         | 3:20         |
| MURRAY BRIDGE - Maurice Rd near Dorset St       | 9.05         | 3.00         |

Services operate school days only #connects with DECD buses

Timetable effective 30 October 2016 and subject to change without notice – please check the LinkSA website for updates <http://linksa.com.au> or contact LinkSA Pty Ltd on (08) 8532 2633 for further information.





## 2. Murray Bridge Eastside

| Eastside Murray Bridge Township Service         |              |              |
|---|--------------|--------------|
| Location  | am (approx.) | pm (approx.) |
| MURRAY BRIDGE - Maurice Rd near Dorset St       | 7:45         | 4:30         |
| MURRAY BRIDGE EAST - Ross Road                  | 7:50         | 4:14         |
| MURRAY BRIDGE - Crn Thule Dve & Lookout Drive   | 8:05         | 4:20         |
| MURRAY BRIDGE - Crn Adelaide Road & Mannum Road | 8:12         | 4:10         |
| MURRAY BRIDGE - South School                    | 8:19         | 3:47         |
| MURRAY BRIDGE - Murray Bridge High School       | 8:28#        | 3:45#        |
| MURRAY BRIDGE - Unity College Senior Campus     | 8:45         | 3:35         |
| MURRAY BRIDGE - North School                    | 8:24         | 3:47         |
| MURRAY BRIDGE - Maurice Road near Dorset St     | 8:50         | 3:25         |

Services operate school days only # connects with DECD buses

Timetable effective 30 October 2016 and subject to change without notice – please check the LinkSA website for updates <http://linksa.com.au> or contact LinkSA Pty Ltd on (08) 8532 2633 for further information.



### 3. Murray Bridge Westside

| Westside Murray Bridge Township Service        |              |              |
|--|--------------|--------------|
| Location                                       | am (approx.) | pm (approx.) |
| MURRAY BRIDGE - Maurice Road near Dorset St    | 7:51         | 4:15         |
| MURRAY BRIDGE - Crn Thomas St & Adelaide Rd    | 8:00         | 4:06         |
| MURRAY BRIDGE - Zerna Avenue                   | 8:05         | 4:02         |
| MURRAY BRIDGE - Crn Brinkley Rd & Hindmarsh Rd | 8:18         | 3:50         |
| MURRAY BRIDGE - South School                   | 8:27         | 3:30         |
| MURRAY BRIDGE - Murray Bridge High School      | 8:35#        | 3:25#        |
| MURRAY BRIDGE - Unity College Senior Campus    | 8:40         | 3:20         |
| MURRAY BRIDGE - North School                   | 8:50         | 3:40#        |
| MURRAY BRIDGE - Maurice Road near Dorset St    | 8:55         | 3:00         |

Services operate school days only # connects with DECD buses

Timetable effective 30 October 2016 and subject to change without notice – please check the LinkSA website for updates <http://linksa.com.au> or contact LinkSA Pty Ltd on (08) 8532 2633 for further information.

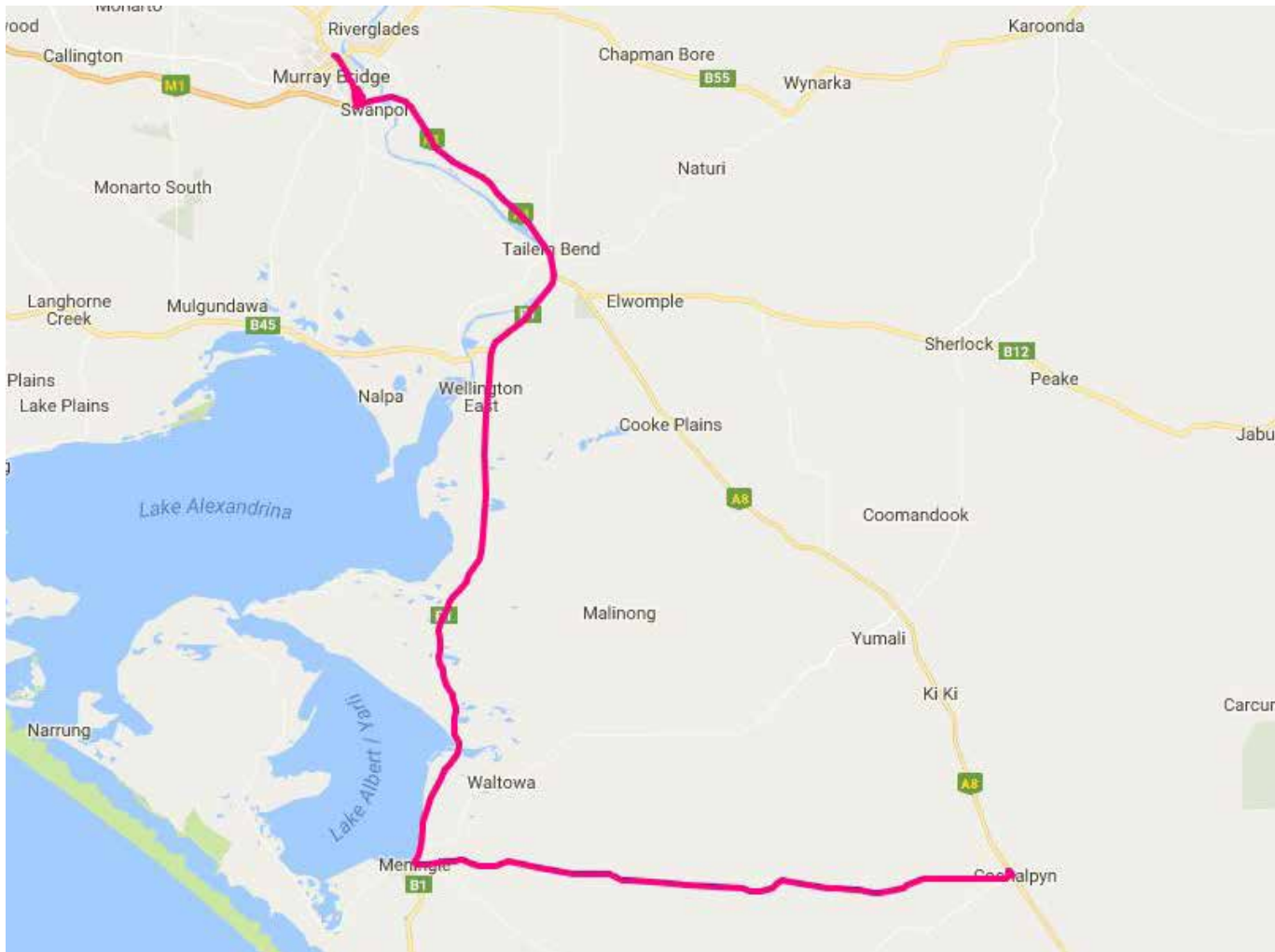


### 4. Coonalpyn (via Meningie)

| Coonalpyn (via Meningie and Wellington)               |              |              |
|---|--------------|--------------|
| Location  | am (approx.) | pm (approx.) |
| COONALPYN - Opp Coonalpyn Hotel, Dukes Hwy            | 6:50         | 5:15         |
| MENINGIE - Caltex Service Station, Princes Hwy        | 7:25         | 4:40         |
| JERVOIS - Jervois Road Bus Stop                       | 8:05         | 3:55         |
| MURRAY BRIDGE - Unity College Senior Campus, Ridge Rd | 8:40         | 3:30         |

Only operates Wednesday and Friday during school holidays via Wellington

Timetable effective 26 January 2016 and subject to change without notice – please check the LinkSA website for updates <http://linksa.com.au> or contact LinkSA Pty Ltd on (08) 8532 2633 for further information.



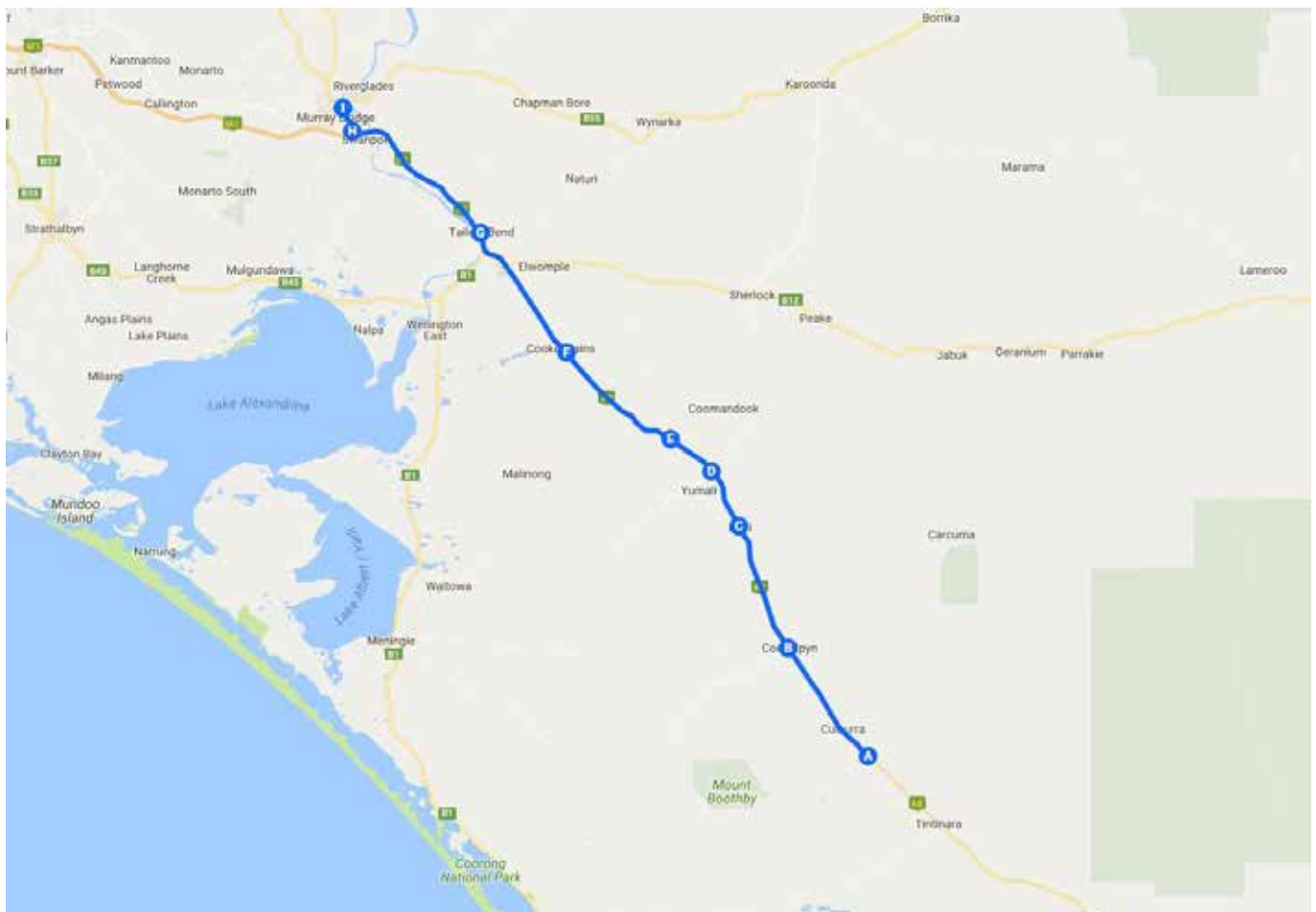
## 5. Culburra (via Coonalpyn, Coomandook and Taillem Bend)

| Culburra (via Coonalpyn, Coomandook and Taillem Bend) |              |              |
|---|--------------|--------------|
| Location  | am (approx.) | pm (approx.) |
| CULBURRA - Dukes Highway                              | 7:05         | 5:03         |
| COONALPYN - Opp Coonalpyn Hotel, Dukes Highway        | 7:16         | 4:52         |
| KI KI - Dukes Highway                                 | 7:27         | 4:40         |
| YUMALI - Dukes Highway                                | 7:34         | 4:35         |
| COOMANDOOK - Dukes Highway                            | 7:42         | 4:30         |
| COOKE PLAINS - Dukes Highway                          | 7:55         | 4:18         |
| TAILEM BEND - Taillem Bend Hall, Railway Terrace      | 8:11         | 4:03         |
| MURRAY BRIDGE - Unity College Senior Campus           | 8:32         | 3:42         |
| MURRAY BRIDGE - Unity College Junior Campus           | 8:34         | 3:45         |

This service does not operate on public holidays.

During school holidays this service operates between Murray Bridge and Taillem Bend only.

Timetable effective 26 January 2016 and subject to change without notice – please check the LinkSA website for updates <http://linksa.com.au> or contact LinkSA Pty Ltd on (08) 8532 2633 for further information.



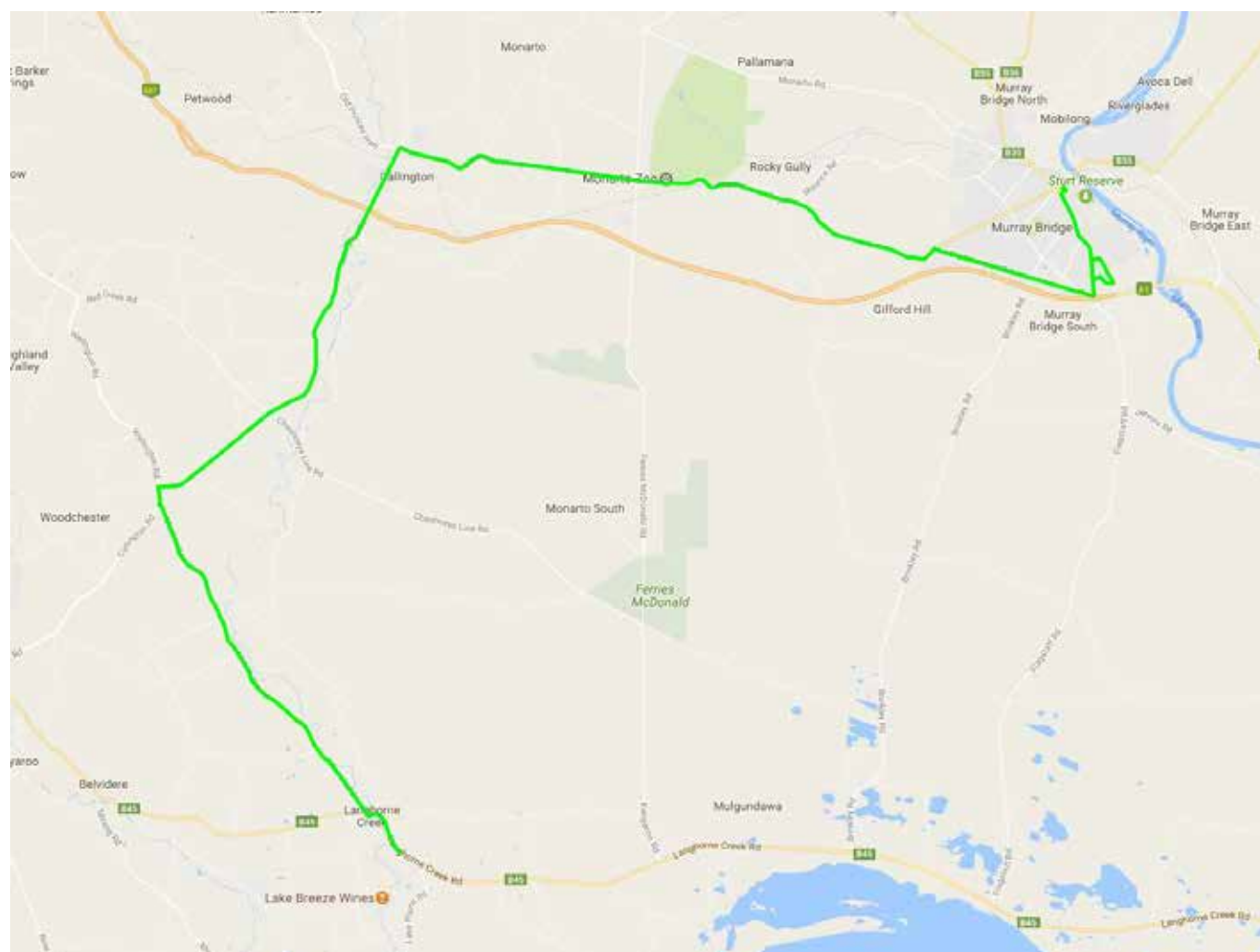


## 6. Langhorne Creek (via Woodchester and Callington)

| Langhorne Creek (via Woodchester and Callington)         |              |              |
|--|--------------|--------------|
| Location   | am (approx.) | pm (approx.) |
| MULGUNDAWAH - Crn Wellington Rd & Brinkley Rd            | 7:35         | 4:42         |
| LANGHORNE CREEK - Wellington Road, Bleasdale's Road Side | 7:45         | 4:32         |
| WOODCHESTER - CFS Station, Callington Road               | 8:05         | 4:12         |
| CALLINGTON - Crn East Tce & Bridge St                    | 8:12         | 4:05         |
| MURRAY BRIDGE - Unity College Senior Campus              | 8:38         | 3:38         |
| MURRAY BRIDGE - Unity College Junior Campus              | 8:40         | 3:40         |

This service operates school days only.

Timetable current from July 2015 and subject to change without notice – please check the LinkSA website for updates <http://linksa.com.au> or contact LinkSA Pty Ltd on (08) 8532 2633 for further information.

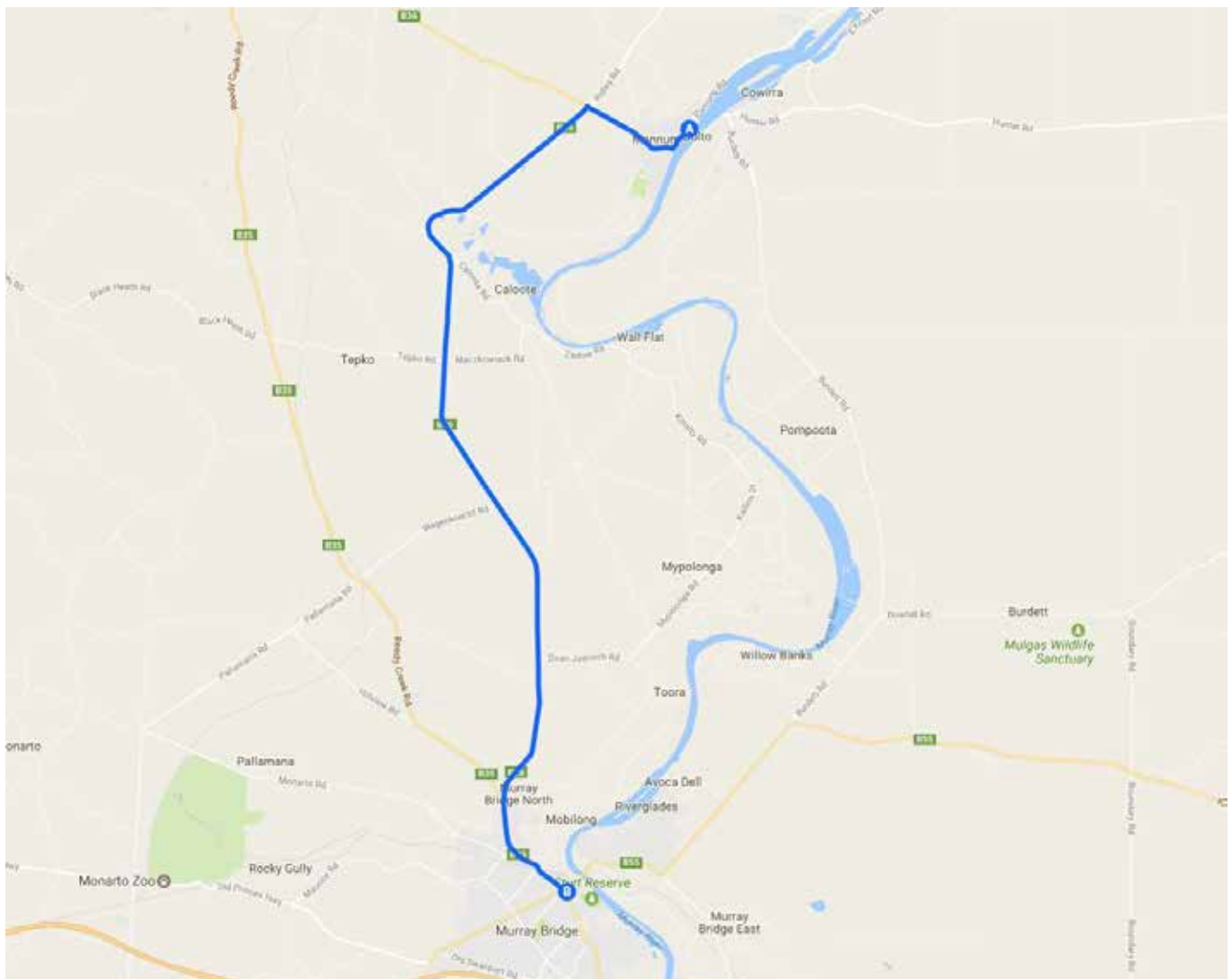


## 7. Mannum

| Mannum  |              |              |
|---|--------------|--------------|
| Location  | am (approx.) | pm (approx.) |
| MANNUM - Arnold Park, Randell Street              | 8:00         | 4:20         |
| MANNUM - Community Centre Car Park, Adelaide Road | 8:05         | 4:23         |
| CALOOTE turn off, Mannum Road                     | 8:10         | 4:30         |
| MYPOLONGA turn off, Mannum Road                   | 8:20         | 4:40         |
| MURRAY BRIDGE - Information Centre, South Terrace | 8:35#        | 4:55         |
| MURRAY BRIDGE - Unity College Senior Campus       | 8:45*        | 3:30*        |
| MURRAY BRIDGE - Unity College Junior Campus       | 8:47*        | 3:35*        |

\* Operates School Days Only # Service Connects to the LinkSA Murray Bridge – Mt Barker Service

Timetable current from July2015 and subject to change without notice – please check the LinkSA website for updates <http://linksa.com.au> or contact LinkSA Pty Ltd on (08) 8532 2633 for further information.



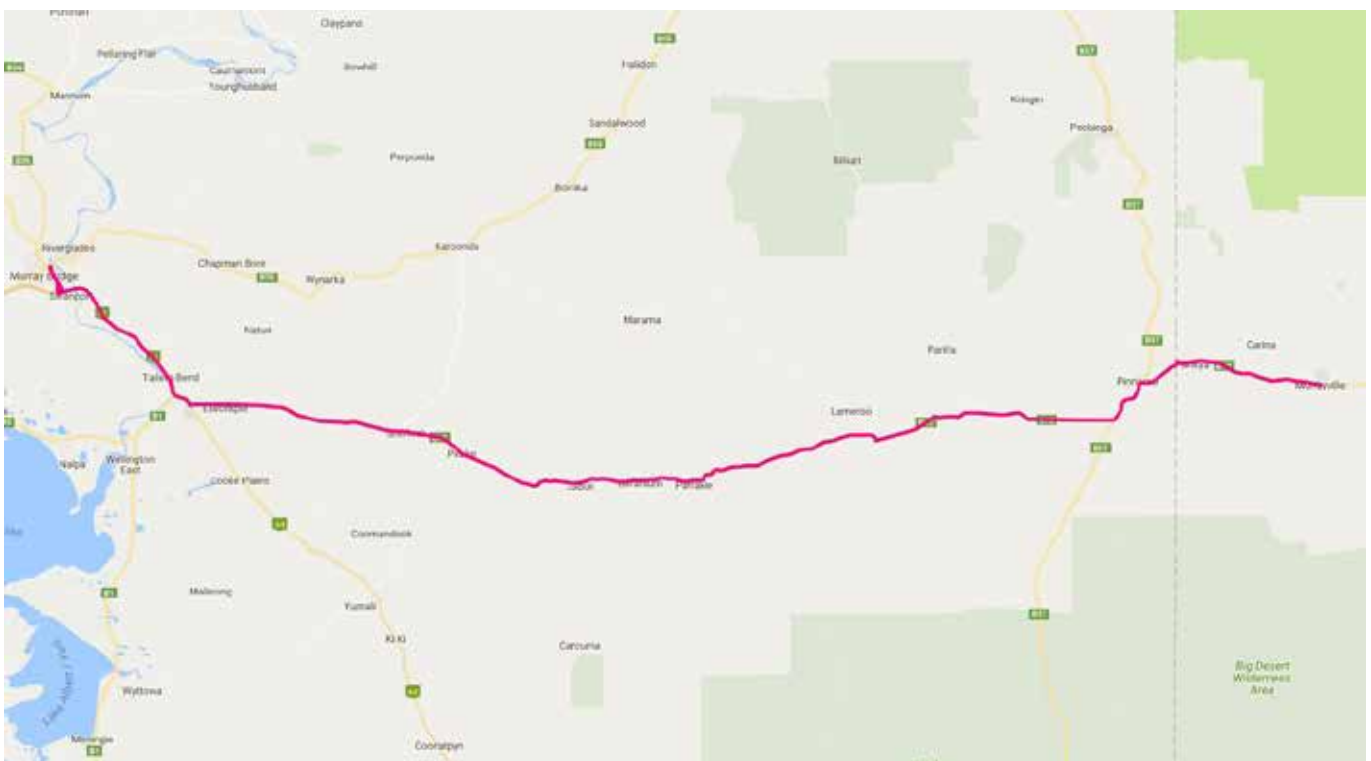
## 8. Murrayville (via Pinnaroo, Lameroo and Tailem Bend)

| Murrayville (via Pinnaroo, Lameroo and Tailem Bend)       |              |              |
|---|--------------|--------------|
| Location  | am (approx.) | pm (approx.) |
| MURRAYVILLE - Murrayville Hotel (SA Time), Mallee Highway | 6:15         | 5:50         |
| PINNAROO - BP Service Station, Mallee Highway             | 6:34         | 5:30         |
| PARILLA - Railway Terrace                                 | 6:51         | 5:12         |
| LAMEROO - Council Office, Railway Terrace North           | 7:01         | 5:02         |
| PARRAKIE - Mallee Highway                                 | 7:19*        | 4:45*        |
| GERANIUM - Community Store, Mallee Highway                | 7:25*        | 4:39*        |
| JABUK - Mallee Highway                                    | 7:33*        | 4:33*        |
| PEAKE - Mallee Highway                                    | 7:40*        | 4:26*        |
| SHERLOCK - Mallee Highway                                 | 7:50*        | 4:16*        |
| MOORLANDS - Mallee Highway                                | 8:00*        | 4:06*        |
| TAILEM BEND - Tailem Bend Hall, Railway Terrace           | 8:12         | 3:55         |
| MURRAY BRIDGE - Unity College Junior Campus               | 8:32         | 3:40         |

\* Stops serviced by booking only

During school holidays this service operates on Wednesday and Friday only.

Timetable effective 26 January 2016 and subject to change without notice – please check the LinkSA website for updates <http://linksa.com.au> or contact LinkSA Pty Ltd on (08) 8532 2633 for further information.



## DECD (Department for Education and Child Development) Runs

The Education Department (DECD) transports students from outlying areas into Murray Bridge and delivers them to the nearest government school, otherwise known as your "school of right".

To travel on the DECD transport system there are certain criteria that needs to be met to determine eligibility.

1. Students must reside more than 5 kms away from the nearest government school.
2. DECD will only provide transport to the nearest government school. (if, for example, you had primary aged students and lived on the other side of Mypolonga, the nearest primary school would obviously be Mypolonga. Students would therefore be ineligible. DECD may however still grant approval IF there were spare sets available on the bus).
3. Bus routes are reviewed by DECD from time to time and they may change as a result of the review.
4. Written approval must be gained to travel on a DECD bus. (Application forms are available from the College. These forms are normally distributed to parents in November of each year.)
5. Secondary students attending Unity College, who are eligible to travel, are automatically approved.
6. Approvals are reviewed annually by the school who manages the service. The school will notify parents if they are approved or not – usually early in January.

There are connecting buses in Murray Bridge that transport the students from the "School of Right" to the Murray Bridge High School. Unity students are transported to and from the High School via 'link buses' both morning and night. There is a charge for this service and parents are required to contact LinkSA for more information.

DECD buses service the following areas and if you any queries or concerns, please contact the coordinating school of your family's bus run.

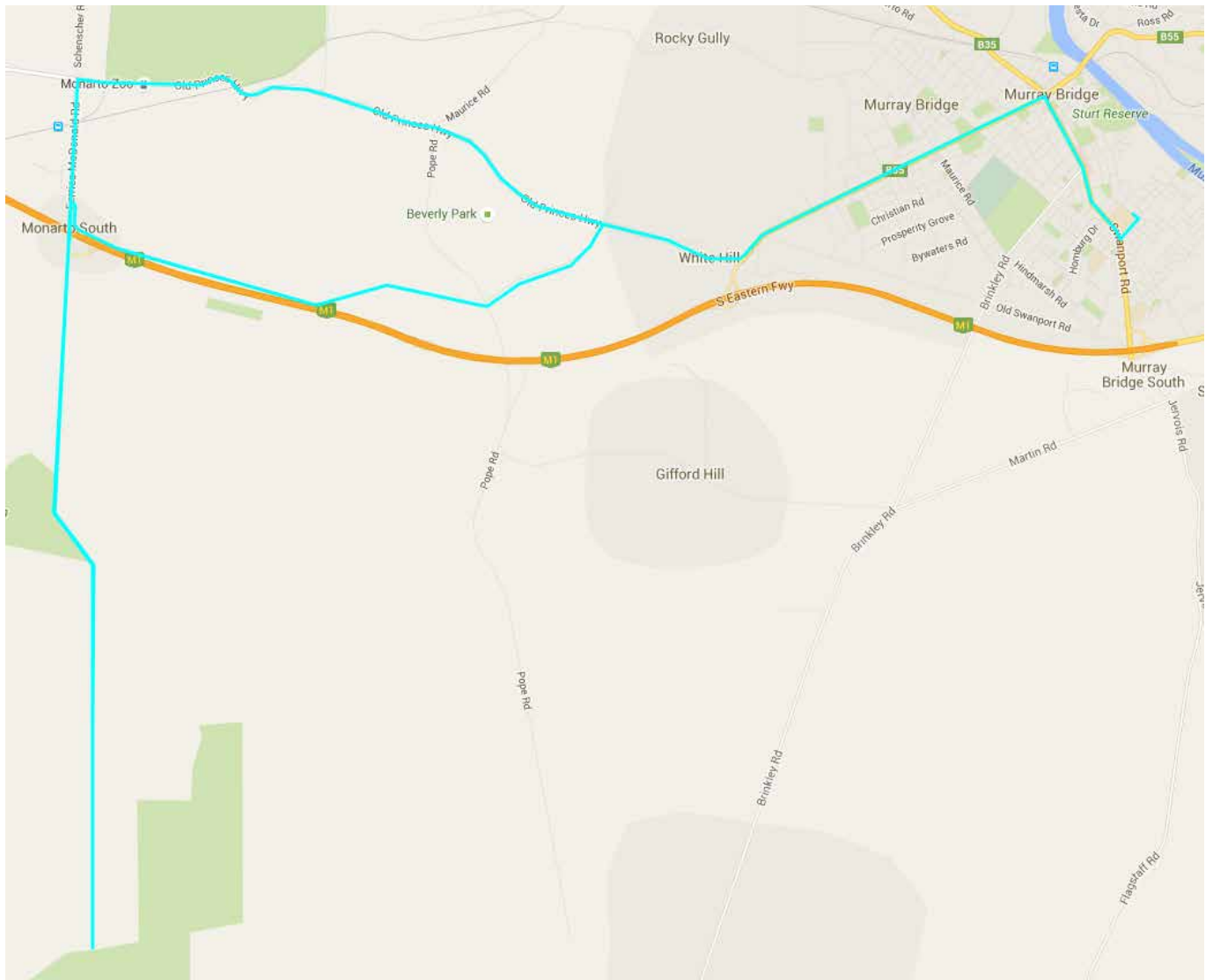
### DECD Bus Routes

| Route   | Contact   |
|---|---|
| 1. Monarto Junction   | Murray Bridge High School, Bryce Gillett, 8532 1788 |
| 2. Mypolonga / Wall Flat  | Murray Bridge High School, Bryce Gillett, 8532 1788 |
| 3. Tepko / Mannum   | Murray Bridge High School, Bryce Gillett, 8532 1788 |
| 4. Wellington   | Murray Bridge High School, Bryce Gillett, 8532 1788 |
| 5. Brinkley   | Murray Bridge High School, Bryce Gillett, 8532 1788 |
| 6. Montieth   | Murray Bridge High School, Bryce Gillett, 8532 1788 |
| 7. Pompoota   | Murray Bridge High School, Bryce Gillett, 8532 1788 |
| 8. Pallama  | Murray Bridge High School, Bryce Gillett, 8532 1788 |
| 9. Bow Hill   | Murray Bridge High School, Bryce Gillett, 8532 1788 |
| Murray Bridge Town Service<br>(LinkSA refer contracted section for details) |   |



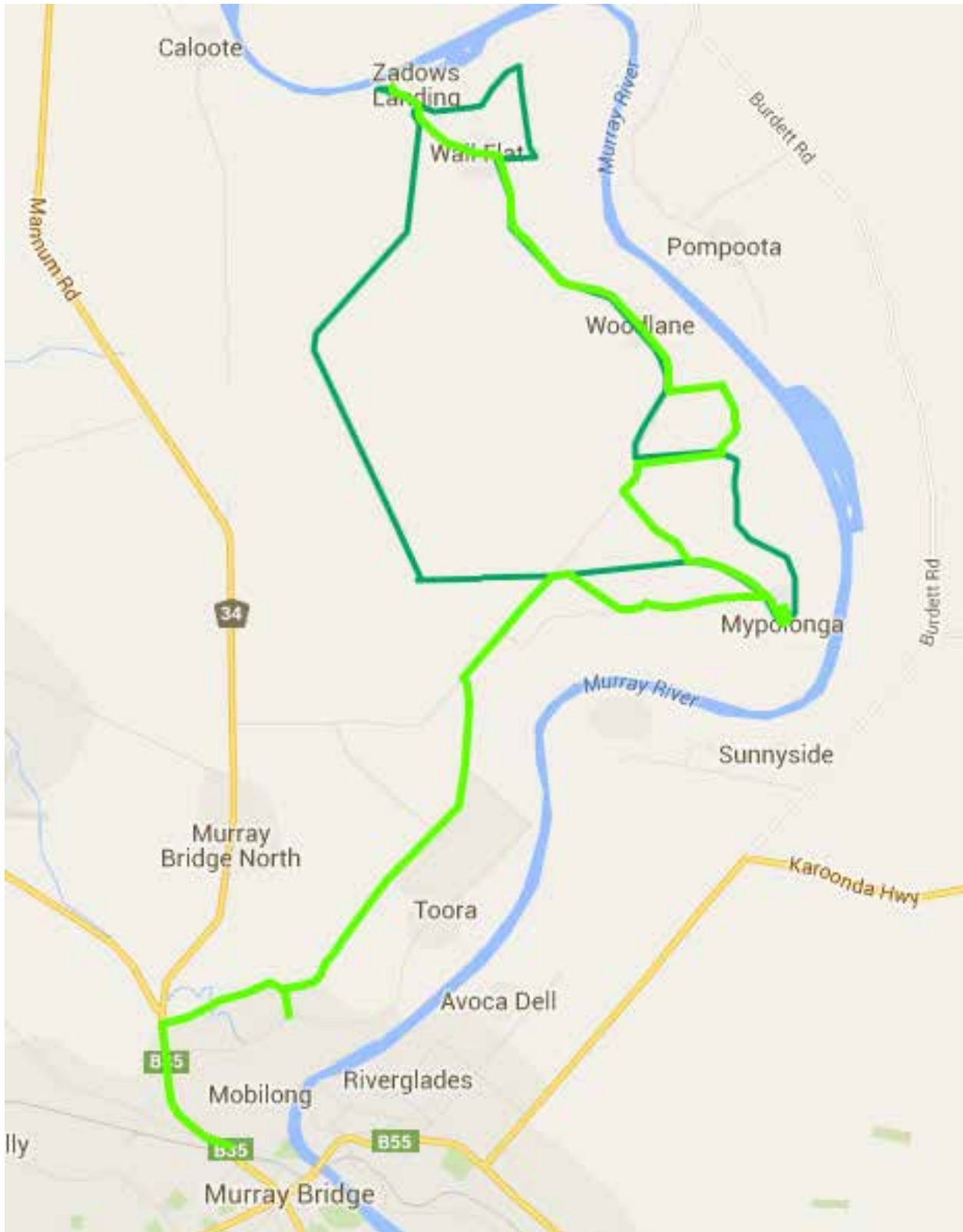
# 1. Monarto Junction

For further information, please contact: Murray Bridge High School, Bryce Gillett, 8532 1788



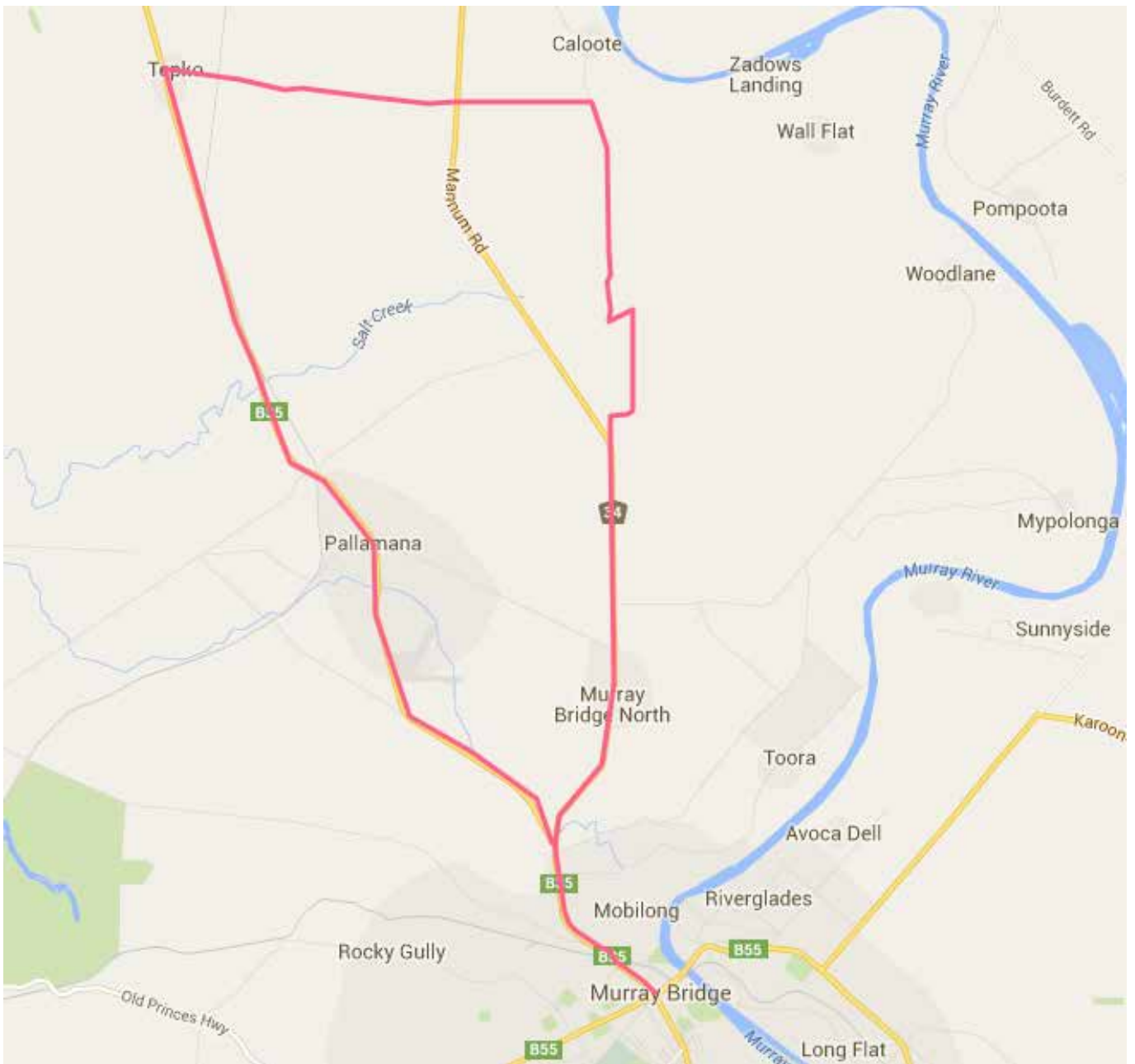
## 2. Mypolonga / Wall Flat

For further information, please contact: Murray Bridge High School, Bryce Gillett, 8532 1788



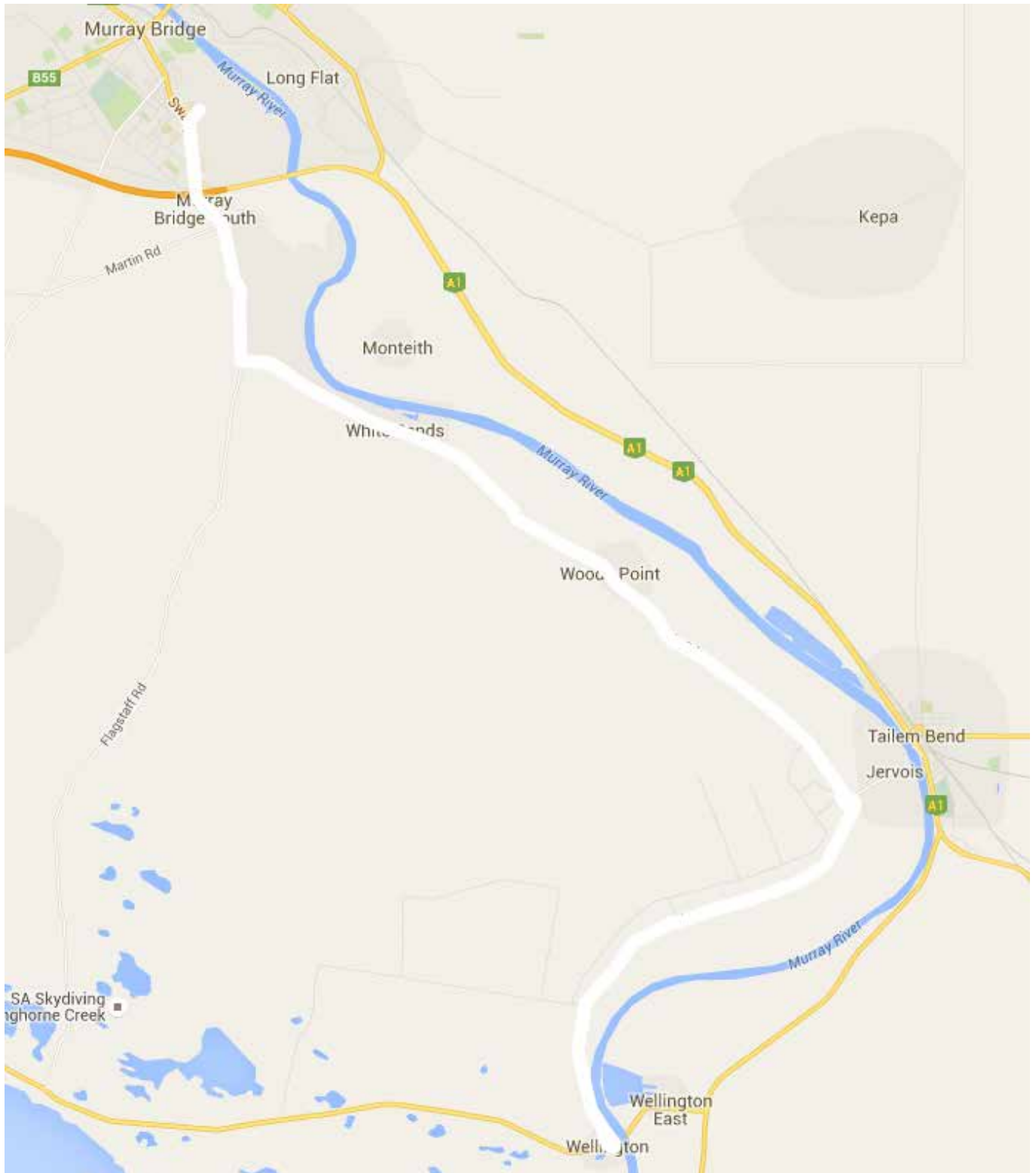
### 3. Tepko / Mannum

For further information, please contact: Murray Bridge High School, Bryce Gillett, 8532 1788



## 4. Wellington

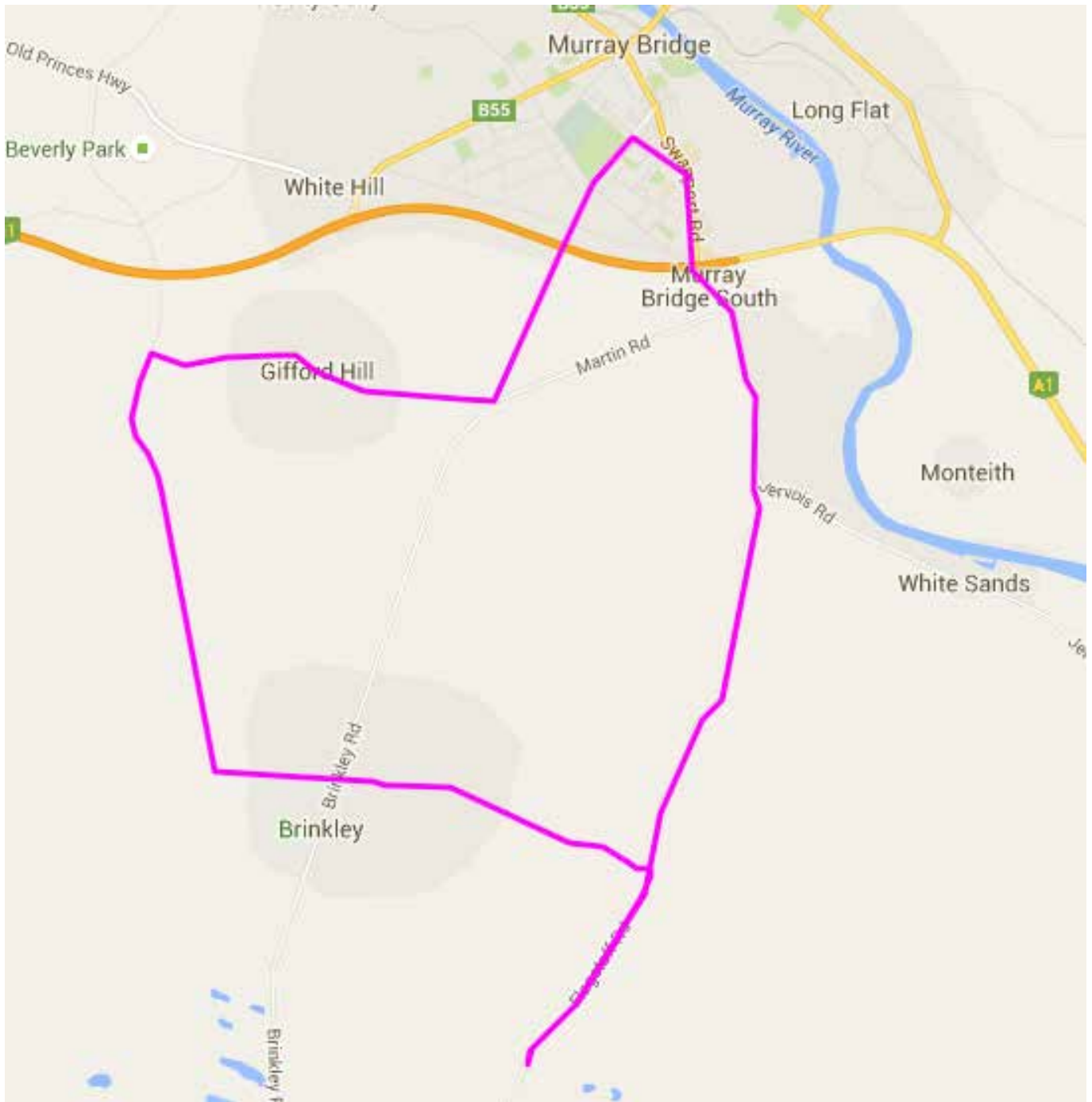
For further information, please contact: Murray Bridge High School, Bryce Gillett, 8532 1788





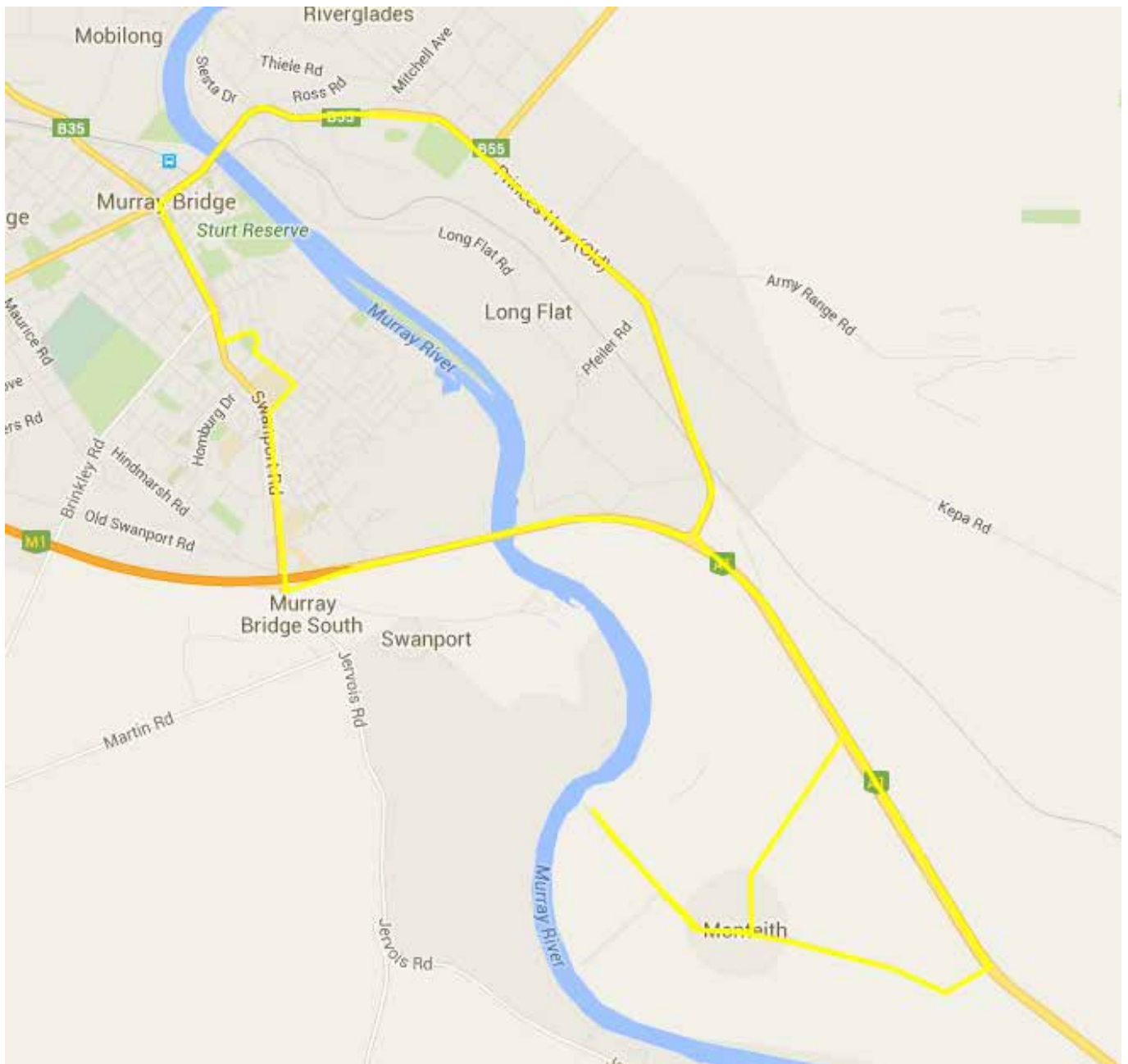
## 5. Brinkley

For further information, please contact: Murray Bridge High School, Bryce Gillett, 8532 1788



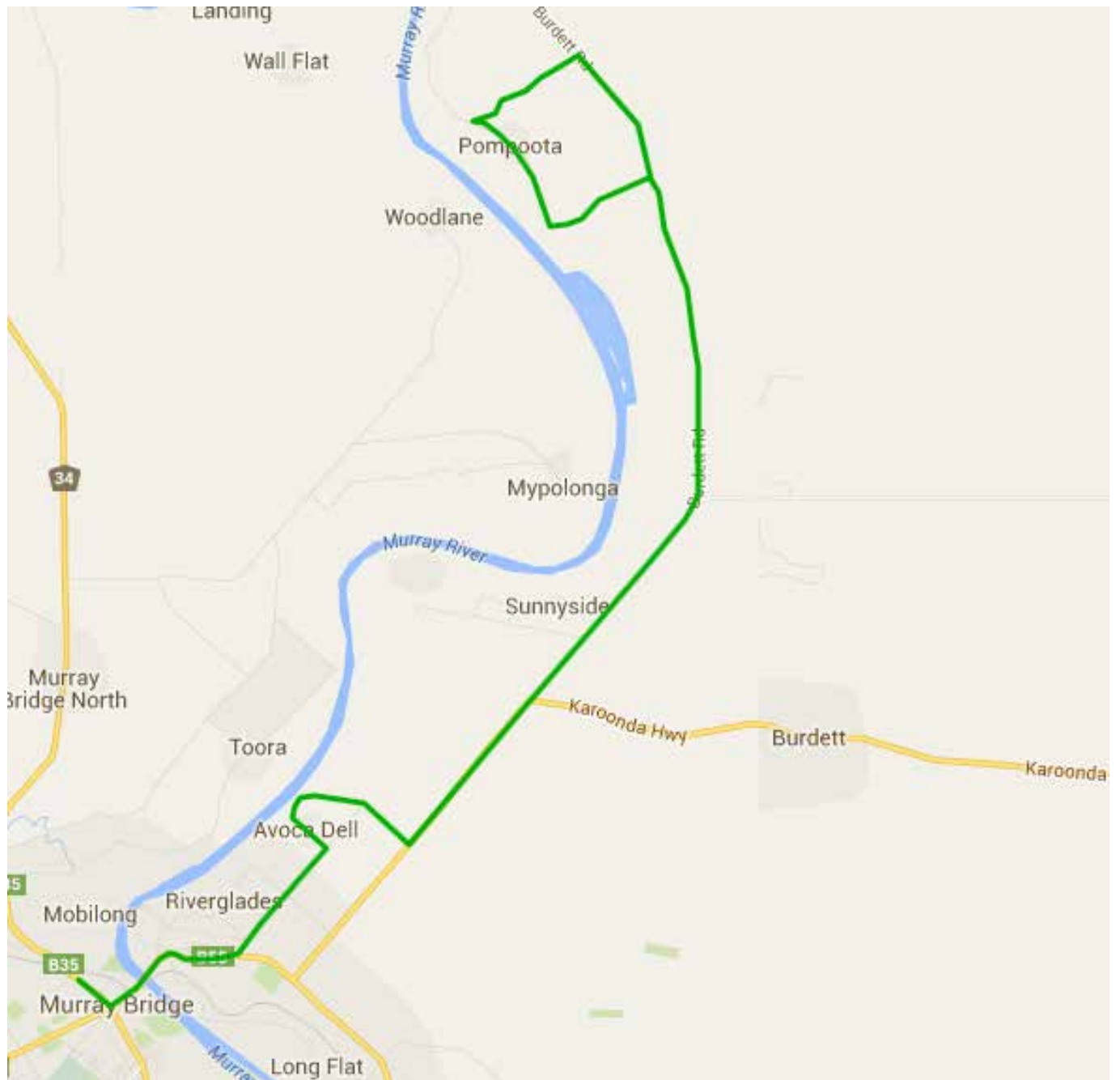
## 6. Montieth

For further information, please contact: Murray Bridge High School, Bryce Gillett, 8532 1788



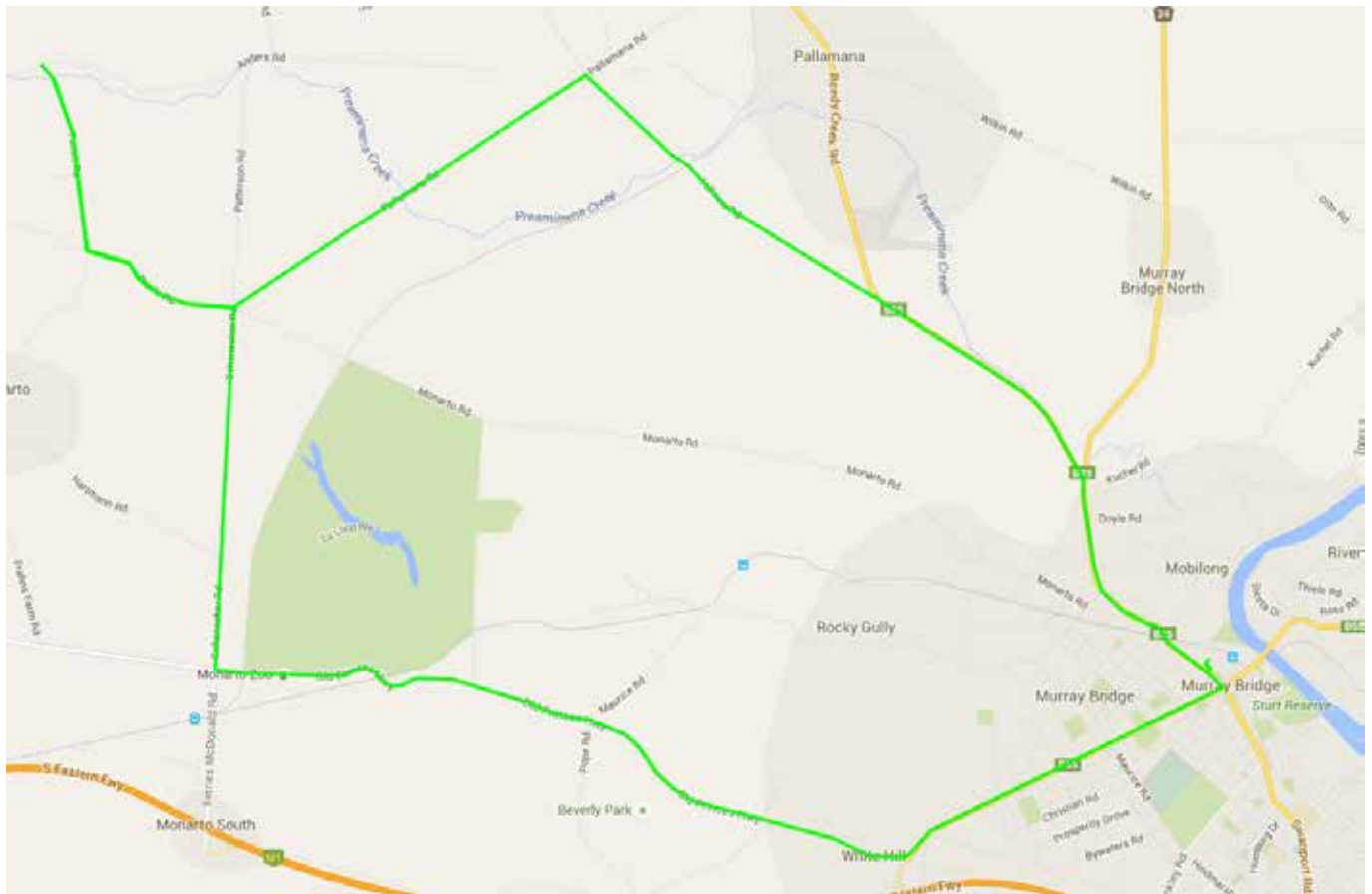
## 7. Pompoota

For further information, please contact: Murray Bridge High School, Bryce Gillett, 8532 1788



## 8. Pallamana

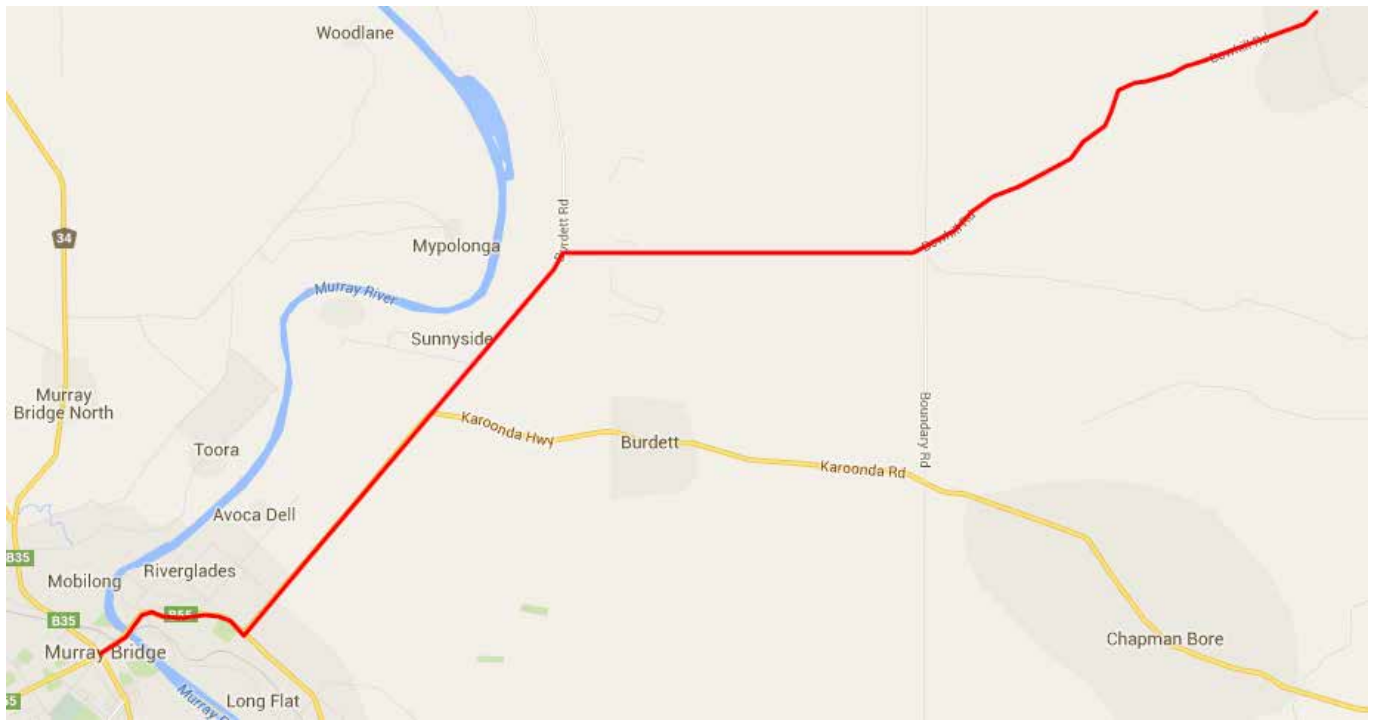
For further information, please contact: Murray Bridge High School, Bryce Gillett, 8532 1788





## 9. Bow Hill

For further information, please contact: Murray Bridge High School, Bryce Gillett, 8532 1788



## Safety Issues

### Bushfire / Natural Disaster / Hazardous Incident

The following processes are in place should there be an issue on any of the bus routes.

1. The CFS provides the College with a fax daily that outlines the areas that will be in Total Fire Ban. We need to be aware of these bans and alert to any fires that could pose risk to our student travellers.
2. If the CFS or SAPOL advise the College that a road or highway is blocked due to an unforeseen incident, we will keep all students at the College and provide appropriate supervision and assistance. Parents will be notified and suitable arrangements made. Students will be kept at the College until such time as they are collected by a parent/guardian (or their nominated adult) or we are advised that the route is safe to transverse.
3. If the bus driver was not notified of an incident and they are subsequently blocked along the route home, then the driver or College will contact all parents along the route and advise them that the students will be returned to the College to be looked after in an appropriate manner.

### Seat Belts

Seat belts are provided in the buses for the buses for the safety of all passengers. It is a government requirement, and a College expectation, that all passengers use them in the appropriate manner.

### Murray Bridge Bus Behaviour Code

The Murray Bridge Bus Behaviour Code, set and approved by all Murray Bridge school principals and the owners of the bus services, clearly defines access to the bus. The buses are provided for students to get to school for educational purposes. They are not provided for transport to social activities out of school. Eligible students who need to get on a different bus to go to sport practice need to seek permission from the school and the driver, and will be dependent upon seats being available. Approval to alight at a different bus stop other than your designated stop, for the purpose of work or sport practice, is also to be sought from the school and the driver, as it becomes a "duty of care" issue.

### Rationale

It is a right of all students and drivers to be able to travel to and from school safely. Students are therefore required to adhere to the following rules. We must ensure that the bus driver's concentration is not disrupted and consequently any action, physical or verbal, threatening this concentration must be prevented.

### Expectations of students

1. Wait safely for the bus:
  - a. Follow the instructions of the teachers at the school bus stops.
  - b. Keep well back from the road.
  - c. Do not play ball games or run around at the bus stop.
  - d. Do not wander away from the bus stop.
  - e. Line up in a single line before boarding the bus. The front person should be one (1) metre from the kerb. Do not come to the kerb while the bus is still moving.

2. Travel safely on the bus:
  - a. Sit in your seat; keep bags under the seat, not in the aisle.
  - b. Respect the needs, comfort and property of other passengers.
  - c. Do not throw any articles inside or out of the bus.
  - d. Keep your whole body in the bus.
  - e. Speak quietly and politely to each other.
  - f. Respect the bus property by not tampering with, marking or damaging it in any way.
  - g. Do not distract the driver – the bus driver has to drive in safety.
  - h. Listen to, and follow the driver's instructions.
  - i. Remain in your seat until the bus reaches your set down point.
  - j. When the bus has completely stopped, alight in a safe, orderly manner – students must get on and off the bus at their designated stop.
  - k. Do not tamper with fire extinguishers. Parents will be charged for refill or damage to fire extinguishers. Parents will also be charged for damage to bus seats, windows etc.
3. Access to the bus:
  - a. Only students allocated to a particular bus run are permitted to travel on the bus. Students are unable to take friends home on the bus.
  - b. Students will only be permitted to be collected or get off the bus at their designated bus stop.
4. Deal with issues appropriately:
  - a. Speak to the driver, a teacher or your parent/caregiver about any concerns.
  - b. Solve problems by talking them through calmly and quietly.
  - c. Inappropriate behaviour on buses will in the first instance result in consequences of having a written warning. Further infringement will lead to suspension from the bus for 2 to 5 days. This will occur with prior notification to parents.
  - d. If behaviour is severe and endangering other passenger and other road users, student will be removed immediately after contacting parents, and period of suspension from bus to be determined by the bus company.

## Expectations of Parents and Caregivers

1. Always safely leave and meet your students at the bus stop:
  - a. Be on time for the bus pick-up and drop-off.
  - b. Remind children of safety rules.
  - c. Regardless of convenience, always park your car on the bus stop side of the road away from bends, crests and corners.
  - d. Where practicable, your children should get out/in the car from the footpath, i.e. from the side furthest from the road.
  - e. Be aware of the Road Traffic Act which states that a person may not drive at a speed greater than 25 kilometres an hour when passing a bus that has stopped to allow children to board or alight.
  - f. Children should learn to wait until the bus has gone and they have clear vision of the road before crossing.
  - g. Notify the principal of any unsafe situations or practices.
  - h. Negotiate any changes to bus stops with the principal and driver.

## Other Expectations

In addition to the safety issues outlined above, students travelling on Unity buses must:

1. Advise the driver or bus contractor in advance that they will not be travelling on the bus for any period of time.
2. Inform the driver in the morning if they will not be using the service in the afternoon.

# Unity College Spring Head Bus Information

## Bus Zones

The entire area covered by our buses is divided into two zones – Northern and Southern.

- **Northern Zone:** Kersbrook, Forreston, Gumeracha, Kenton Valley, Birdwood, Mount Torrens, Tungkillo and Mount Pleasant.
- **Southern Zone:** Charleston, Woodside, Lobethal, Oakbank, Balhannah, Littlehampton and Nairne.

## Bus Fees

- **Pre-Booked One-Way Use:** \$103.75 per term per child
- **Pre-Booked Full Time Return Use:** \$207.50 per term per child
- **Casual Trips:** \$5 per trip (one way) per child

There is no refund on unused bookings.

## Bus Schedules

When it comes to timetables, our school buses DO NOT run like commercial bus companies. We offer a school-based rural service. Times on the bus schedule are approximate and can vary depending on whether the bus drivers need to accommodate casual or one way users of the service. Bus drivers have been advised to wait for children no longer than a couple of minutes at each stop.

## Absentees

In the event of your child/ren's unexpected absence, please ring your bus driver. This saves precious time waiting at the stop for children who are never going to show up and enables other children on board to be at school in plenty of time.

If you know in advance that your child will not require the bus, please call the school office on 8389 4334 before 2.45pm.

## Bus Behaviour

Children are expected to behave at all times when travelling on the bus. It would be great if you could support our school by encouraging your child to view the bus drivers as having the same authority as teachers and thus deserving of the same respect. Consistent, unruly behaviour may lead to exclusion from using the bus service. As you would appreciate, your child's safety is paramount and for this reason, bus drivers need a quiet and stress free environment to concentrate on driving. This way, their 'precious cargo' arrive home to you safe and sound. Inattentiveness by the driver, usually caused by the distractions of the children fighting, yelling or screaming etc... is the major cause of accidents on school buses. We need you to support us in our desire to ensure safe conditions for our drivers.

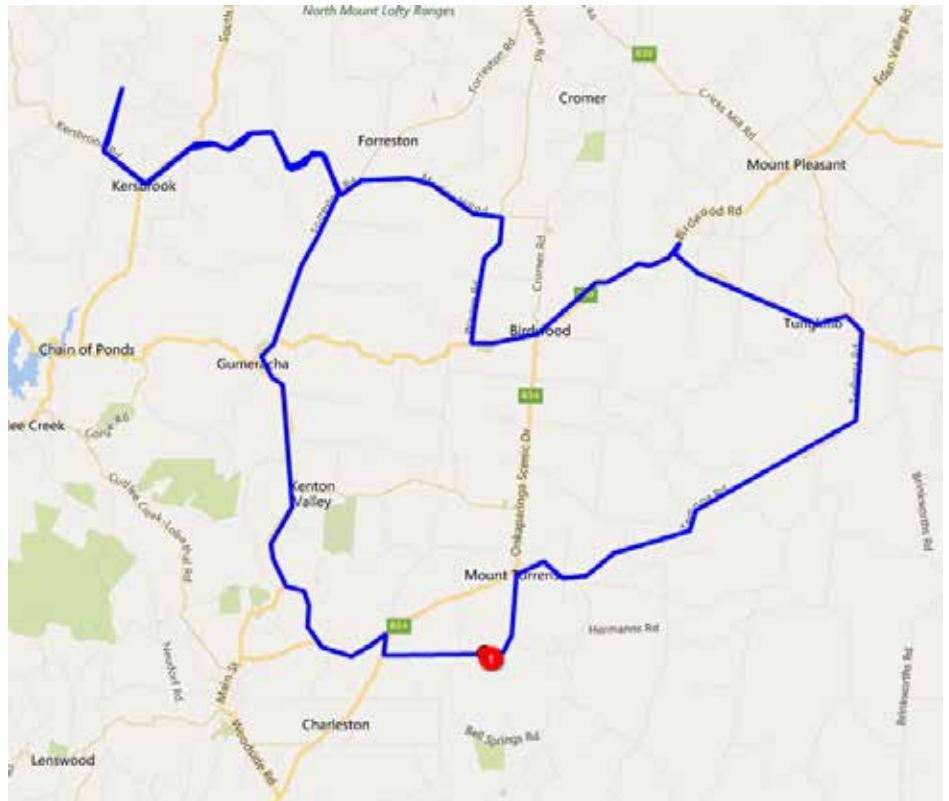


# Unity College Spring Head Bus Services

## 1. Northern Zone

### Buses now servicing:

1. Tungkillo
2. Birdwood
3. Kersbrook
4. Forreston
5. Gumeracha
6. Kenton Valley



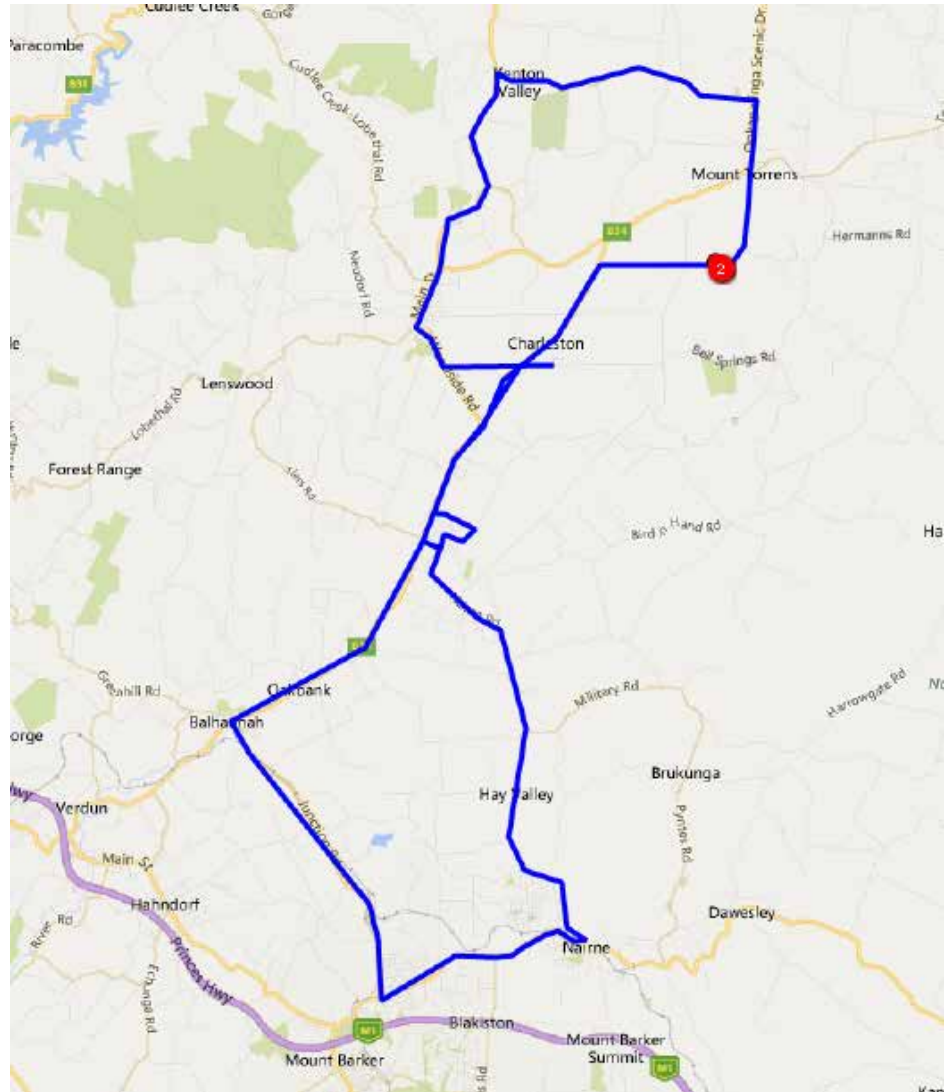
For any inquiries please contact the Unity College Spring Head Office during business hours on (08) 8389 4334 or email [mail@unityspringhead.sa.edu.au](mailto:mail@unityspringhead.sa.edu.au).

# Unity College Spring Head Bus Services

## 2. Southern Zone

### Buses now servicing:

1. Nairne
2. Littlehampton
3. Balhannah
4. Oakbank
5. Woodside
6. Charleston
7. Lobethal
8. Kenton Valley
9. Mt Torrens



For any inquires please contact the Unity College Spring Head Office during business hours on (08) 8389 4334 or email [mail@unityspringhead.sa.edu.au](mailto:mail@unityspringhead.sa.edu.au).



Owl Drive, Murray Bridge  
PO Box 5141, Murray Bridge South  
South Australia 5253

**t.** 08 8532 0100  
**e.** [unity@unitycollege.sa.edu.au](mailto:unity@unitycollege.sa.edu.au)

**[unitycollege.sa.edu.au](http://unitycollege.sa.edu.au)**



**UNITY**  
**COLLEGE**  
**SPRING HEAD**  
INSPIRE EXPLORE ACHIEVE

280 Springhead Road  
PO Box 444, Mount Torrens  
South Australia 5244

**t.** 08 8389 4334  
**e.** [mail@unityspringhead.sa.edu.au](mailto:mail@unityspringhead.sa.edu.au)

**[unityspringhead.sa.edu.au](http://unityspringhead.sa.edu.au)**

