

# Bus Guide 2023

#YOUbelong



## Table of Contents

<b>Introduction</b>	<b>4</b>
<b>Unity College Murraylands Bus Services</b>	<b>5</b>
<b>Contracted Runs</b>	<b>5</b>
<b>LinkSA Buses</b>	<b>5</b>
1. Murray Bridge Northside	6
2. Murray Bridge Eastside	7
3. Murray Bridge Westside	8
4. Coonalpyn (via Meningie)	9
5. Culburra (via Coonalpyn, Coomandook and Tailem Bend)	10
6. Langhorne Creek (via Woodchester and Callington)	11
7. Mannum	12
8. Murrayville (via Pinnaroo, Lameroo and Tailem Bend)	13
9. Wellington (via Jervois & Woods Point)	14
<b>Unity College Bus Services</b>	<b>15</b>
1. Mount Pleasant	16
2. Nildottie	17
3. Karoonda	18
<b>Department for Education (DfE) Runs</b>	<b>19</b>
<b>DfE Bus Routes</b>	<b>19</b>
1. Monarto	20
2. Mypolonga / Wall Flat	21
3. Pompoota	22
4. Pallamana	23
5. Bow Hill	24
<b>Safety Issues</b>	<b>25</b>
Expectations of Students	25
Expectations of Parents and Caregivers	26
Other Expectations	26
Bushfire / Natural Disaster / Hazardous Incident	26
Seat Belts	26

## Introduction

Unity College proudly offers its educational program to families from all areas in the Murraylands region. Therefore the oversight and knowledge of bus runs and the safety of our students is of high importance to us.

For each of the bus runs, together with a diagram of the region they service, contact details are listed under the main categories of supply.

Also included is a statement and the guidelines with regard to safety and expectations for students while travelling on a bus. It is also designed to alert students to the consequences should they fail to meet the guidelines.

We hope that this document will help your understanding of all the 'runs' and offer information to assist you in transporting your child/ren to and from school via bus.

For more detailed 'run specific' information, please contact the appropriate coordinator of the service.

With Christian greetings,

**Kaye Mathwin-Cox**  
Principal

**Michael Obst**  
Business Manager

# Unity College Murraylands Bus Services

## CONTRACTED RUNS

The Department of Planning, Transport and Infrastructure (DPTI) controls the allocation of bus runs throughout the state. Our current contractor is LinkSA.

Fees for these runs are controlled by LinkSA (please contact them directly for current pricing). Payment is direct to the bus driver or the company, either by paying for an individual trip, a multi-trip (10 trips), or by purchasing a 4-week school pass.

To be able to access school buses, a pack is available from the school which includes a gold form that needs to be stamped and signed at the school prior to travel.

## LINKSA BUSES

1. Murray Bridge Township Northside
2. Murray Bridge Township Eastside
3. Murray Bridge Township Westside
4. Coonalpyn (via Meningie)
5. Culburra (via Coonalpyn, Coomandook and Taillem Bend)
6. Langhorne Creek (via Woodchester and Callington)
7. Mannum
8. Murrayville (via Pinnaroo, Lameroo and Taillem Bend)
9. Wellington (via Jervois and Woods Point)

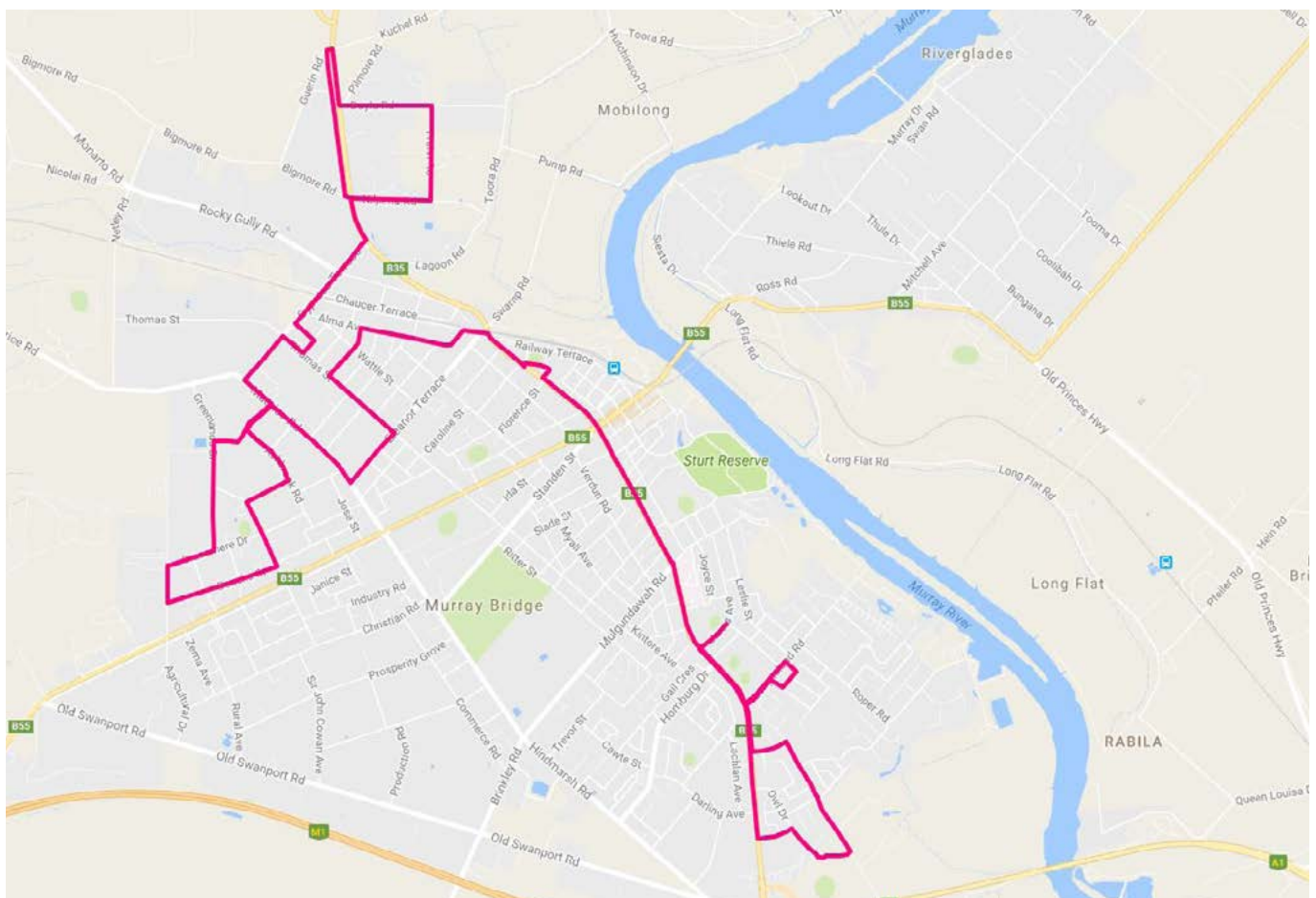


## 1. Murray Bridge Northside

NORTHSIDE MURRAY BRIDGE TOWNSHIP SERVICE		
LOCATION	AM (APPROX.)	PM (APPROX.)
MURRAY BRIDGE - Maurice Road	7:50	4:15
MURRAY BRIDGE NORTH - Bigmore Road	7:55	4:10
MURRAY BRIDGE NORTH - Crn Nilpena Rd & Frahn Rd	8:00	4:05
MURRAY BRIDGE - Blackwood Ave & Thomas St	8:05	3:45#
MURRAY BRIDGE - Cnr Doeke Rd & Lincoln Rd	8:15	3:55
MURRAY BRIDGE - Maurice Rd near Dorset St	8:19	3:48
MURRAY BRIDGE - Murray Bridge North PS	8.30#	3:40
MURRAY BRIDGE - Murray Bridge South School		3.32#
MURRAY BRIDGE - Murray Bridge High School	8:38#	3:30
MURRAY BRIDGE - Unity College – Senior Campus	8:43	3:20
MURRAY BRIDGE - Maurice Rd near Dorset St	9.05	3.00

Services operate school days only    #connects with DECD buses

Timetable effective 16 October 2017 and subject to change without notice – please check the LinkSA website for updates <http://linksa.com.au> or contact LinkSA Pty Ltd on (08) 8532 2633 for further information.



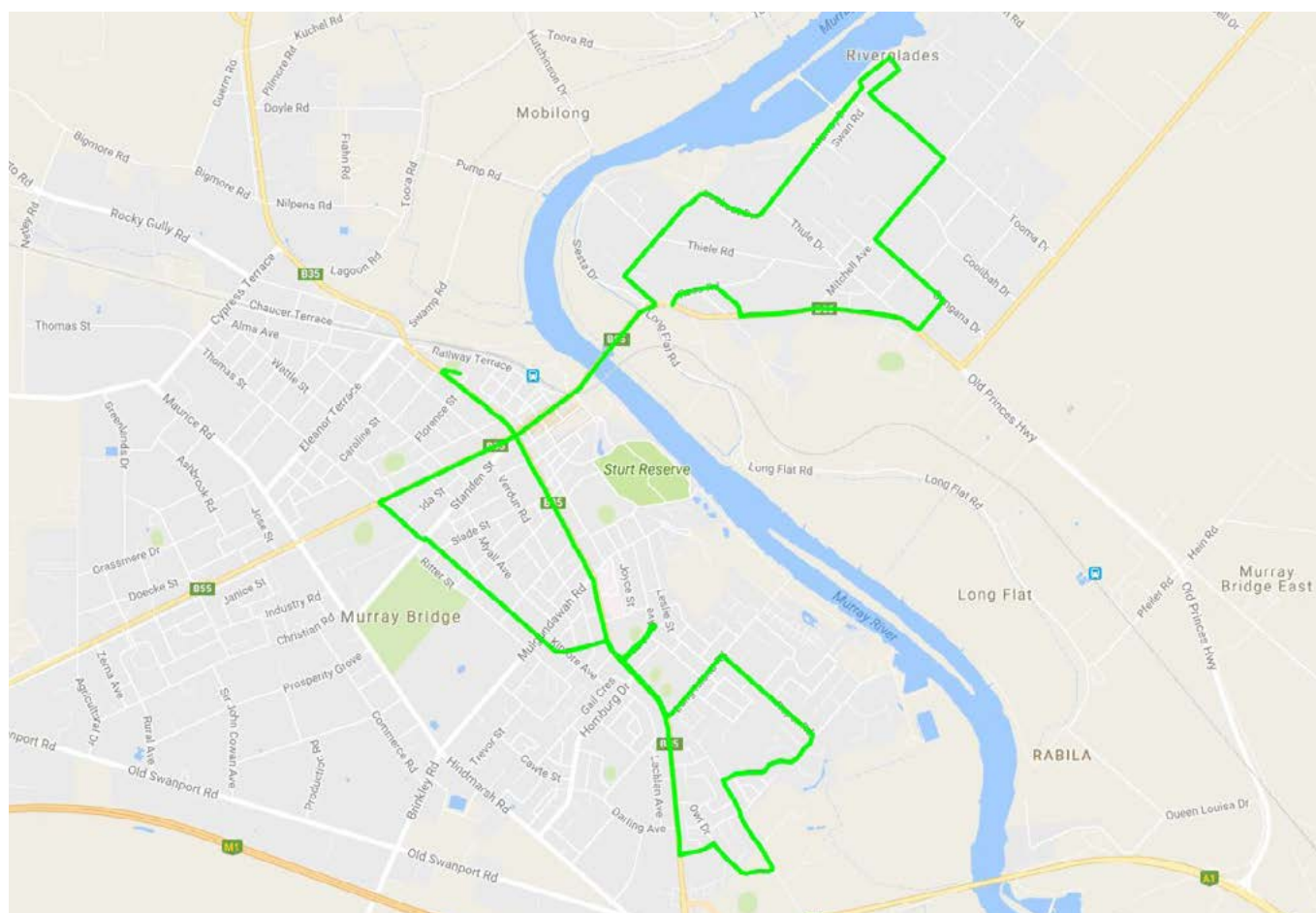
## 2. Murray Bridge Eastside

### EASTSIDE MURRAY BRIDGE TOWNSHIP SERVICE

LOCATION	AM (APPROX.)	PM (APPROX.)
MURRAY BRIDGE - Maurice Rd near Dorset St	7:45	4:30
MURRAY BRIDGE EAST - Ross Road	7:50	4:14
MURRAY BRIDGE - Crn Thule Dve & Lookout Drive	8:05	4:20
MURRAY BRIDGE - Crn Adelaide Road & Mannum Road	8:12	4:10 / 4:25
MURRAY BRIDGE - Murray Bridge South School	8:19	3:47
MURRAY BRIDGE - Murray Bridge High School	8:28#	3:45#
MURRAY BRIDGE - Unity College Senior Campus	8:35	3:52
MURRAY BRIDGE - Murray Bridge North School	8:45	3:35
MURRAY BRIDGE - Maurice Road near Dorset St	8:50	3:25

Services operate school days only #connects with DECD buses

Timetable effective 16 October 2017 and subject to change without notice - please check the LinkSA website for updates <http://linksa.com.au> or contact LinkSA Pty Ltd on (08) 8532 2633 for further information.



### 3. Murray Bridge Westside

WESTSIDE MURRAY BRIDGE TOWNSHIP SERVICE		
LOCATION	AM (APPROX.)	PM (APPROX.)
MURRAY BRIDGE - Maurice Road near Dorset St	7:51	4:15
MURRAY BRIDGE - Crn Thomas St & Adelaide Rd	8:00	4:06
MURRAY BRIDGE - Zerna Avenue	8:05	4:02
MURRAY BRIDGE - Crn Brinkley Rd & Hindmarsh Rd	8:18	3:50
MURRAY BRIDGE - Murray Bridge South School	8:27	3:30
MURRAY BRIDGE - Murray Bridge High School	8:35#	3:25#
MURRAY BRIDGE - Unity College Senior Campus	8:40	3:20
MURRAY BRIDGE - Murray Bridge North School	8:50	3:40#
MURRAY BRIDGE - Maurice Road near Dorset St	8:55	3:00

Services operate school days only    #connects with DECD buses

Timetable effective 16 October 2017 and subject to change without notice – please check the LinkSA website for updates <http://linksa.com.au> or contact LinkSA Pty Ltd on (08) 8532 2633 for further information.



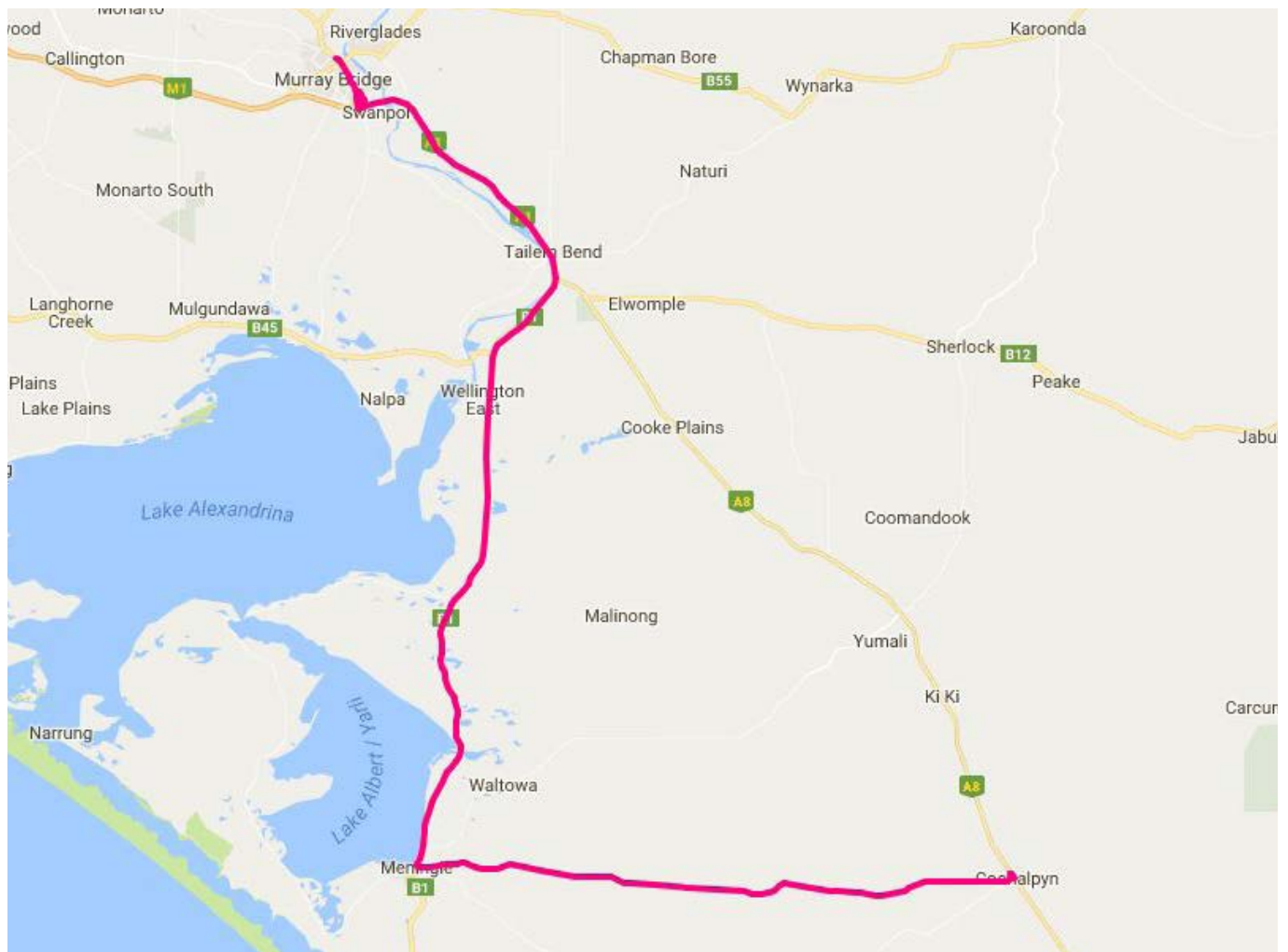


## 4. Coonalpyn (via Meningie)

CONNALPYN (VIA MENINGIE AND WELLINGTON)		
LOCATION	AM (APPROX.)	PM (APPROX.)
COONALPYN - Opp Coonalpyn Hotel, Dukes Hwy	6:50	5:15
MENINGIE - Caltex Service Station, Princes Hwy	7:25	4:40
MURRAY BRIDGE - Unity College Senior Campus, Ridge Rd	8:30	3:40

Only operates Wednesday and Friday during school holidays via Wellington

Timetable effective 24 July 2017 and subject to change without notice – please check the LinkSA website for updates <http://linksa.com.au> or contact LinkSA Pty Ltd on (08) 8532 2633 for further information.



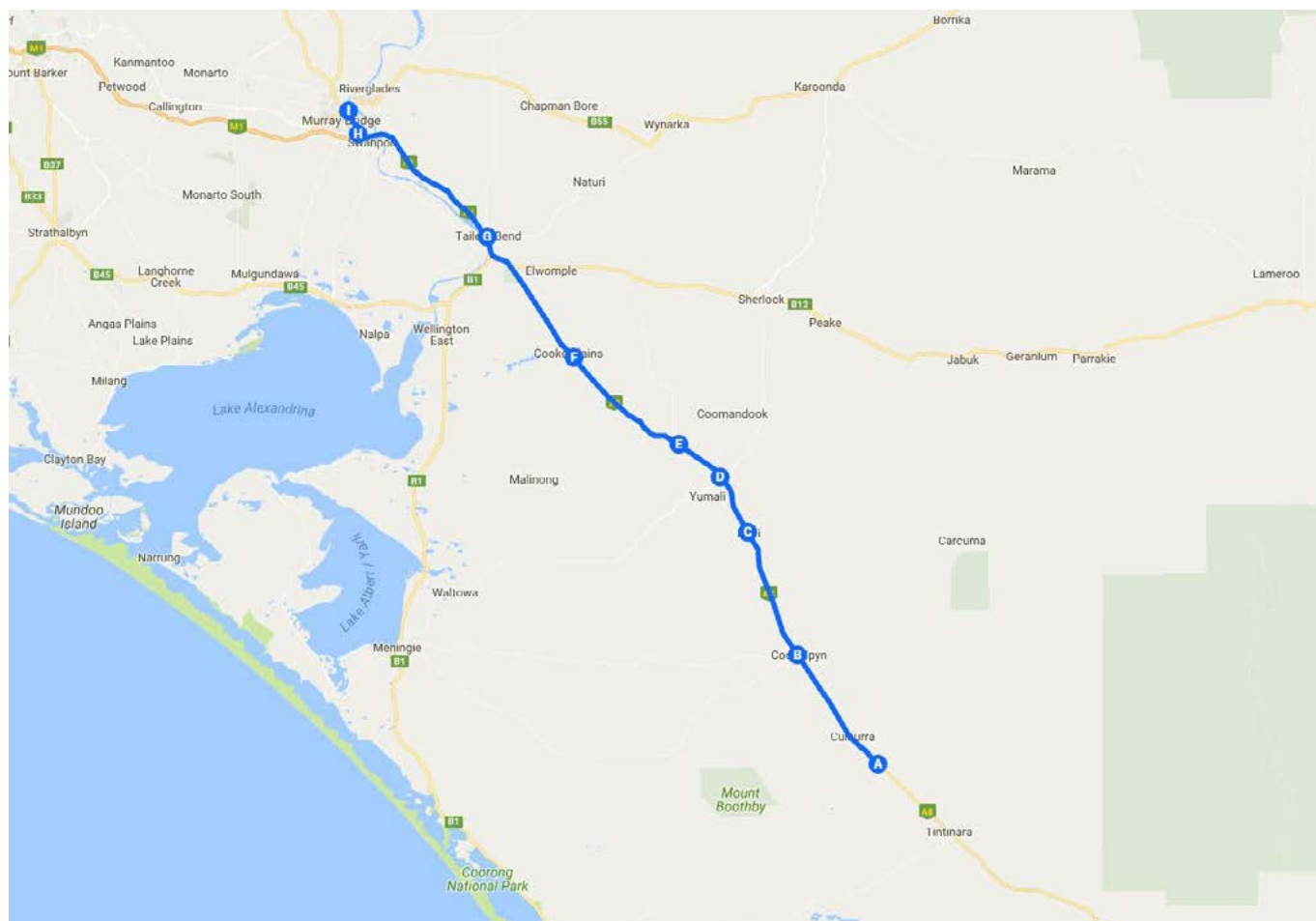
## 5. Culburra (via Coonalpyn, Coomandook & Tailem Bend)

CULBURRA (VIA COONALPYN, COOMANDOOK AND TAILEM BEND)		
LOCATION	AM (APPROX.)	PM (APPROX.)
CULBURRA - Dukes Highway	7:05	5:03
COONALPYN - Opp Coonalpyn Hotel, Dukes Highway	7:16	4:52
KI KI - Dukes Highway	7:27	4:40
YUMALI - Dukes Highway	7:34	4:35
COOMANDOOK - Dukes Highway	7:42	4:30
COOKE PLAINS - Dukes Highway	7:55	4:18
TAILEM BEND - Tailem Bend Hall, Railway Terrace	8:11	4:03
MURRAY BRIDGE - Unity College Senior Campus	8:32	3:42
MURRAY BRIDGE - Unity College Junior Campus	8:34	3:45

This service does not operate on public holidays.

During school holidays this service operates between Murray Bridge and Tailem Bend only.

Timetable effective 24 July 2017 and subject to change without notice – please check the LinkSA website for updates <http://linksa.com.au> or contact LinkSA Pty Ltd on (08) 8532 2633 for further information.

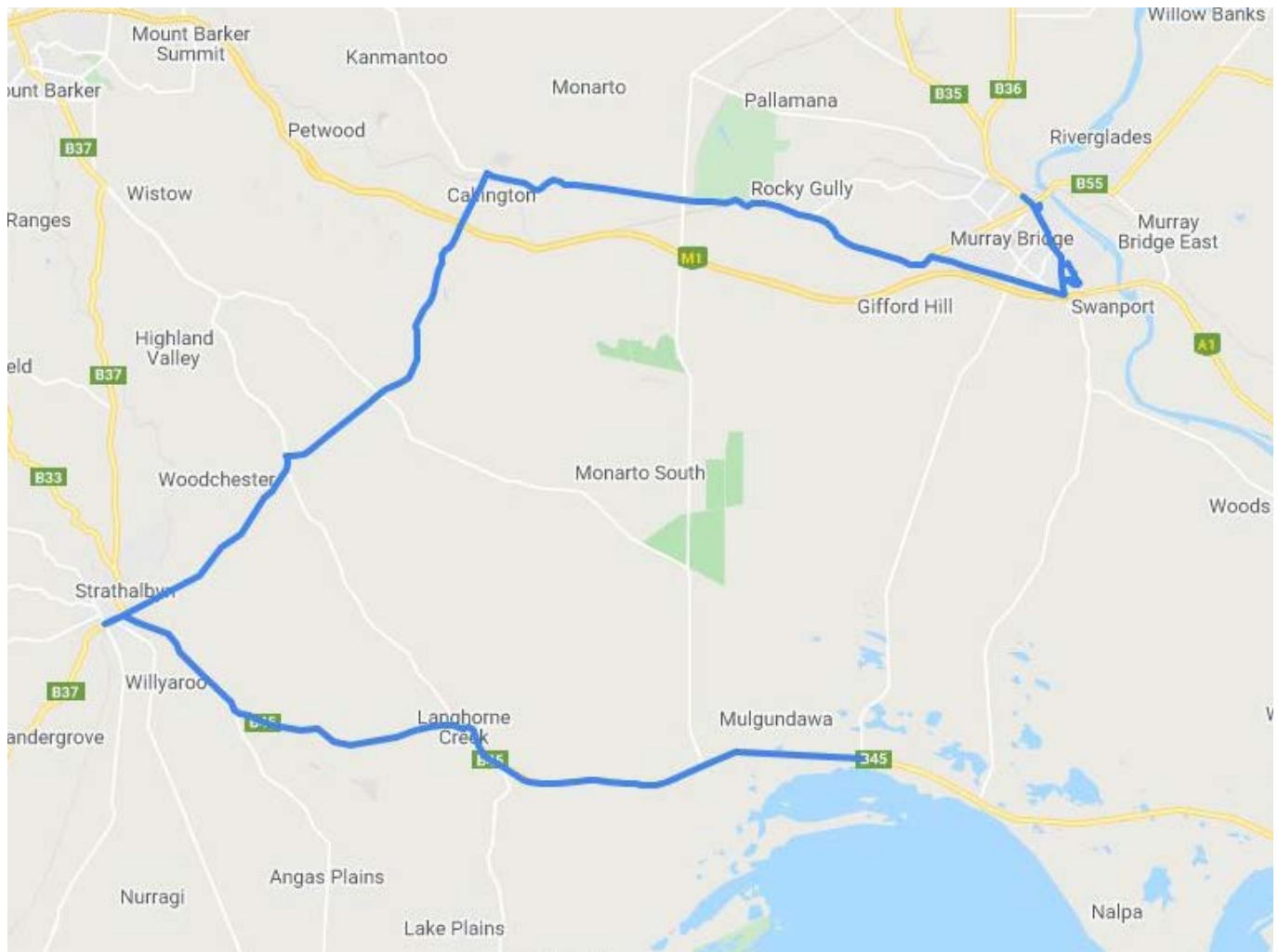


## 6. Langhorne Creek (via Strathalbyn & Callington)

LANGHORNE CREEK (VIA WOODCHESTER AND CALLINGTON)		
LOCATION	AM (APPROX.)	PM (APPROX.)
MULGUNDAWAH - Crn Wellington Rd & Brinkley Rd	7:35	4:42
LANGHORNE CREEK - Wellington Road, Bleasdale's Road Side	7:45	4:32
WOODCHESTER - CFS Station, Callington Road	8:00	4:12
CALLINGTON - Crn East Tce & Bridge St	8:12	4:05
MURRAY BRIDGE - Unity College Senior Campus	8:38	3:38
MURRAY BRIDGE - Unity College Junior Campus	8:40	3:40

This service operates school days only.

Timetable current from 5 November 2018 and subject to change without notice – please check the LinkSA website for updates <http://linksa.com.au> or contact LinkSA Pty Ltd on (08) 8532 2633 for further information.

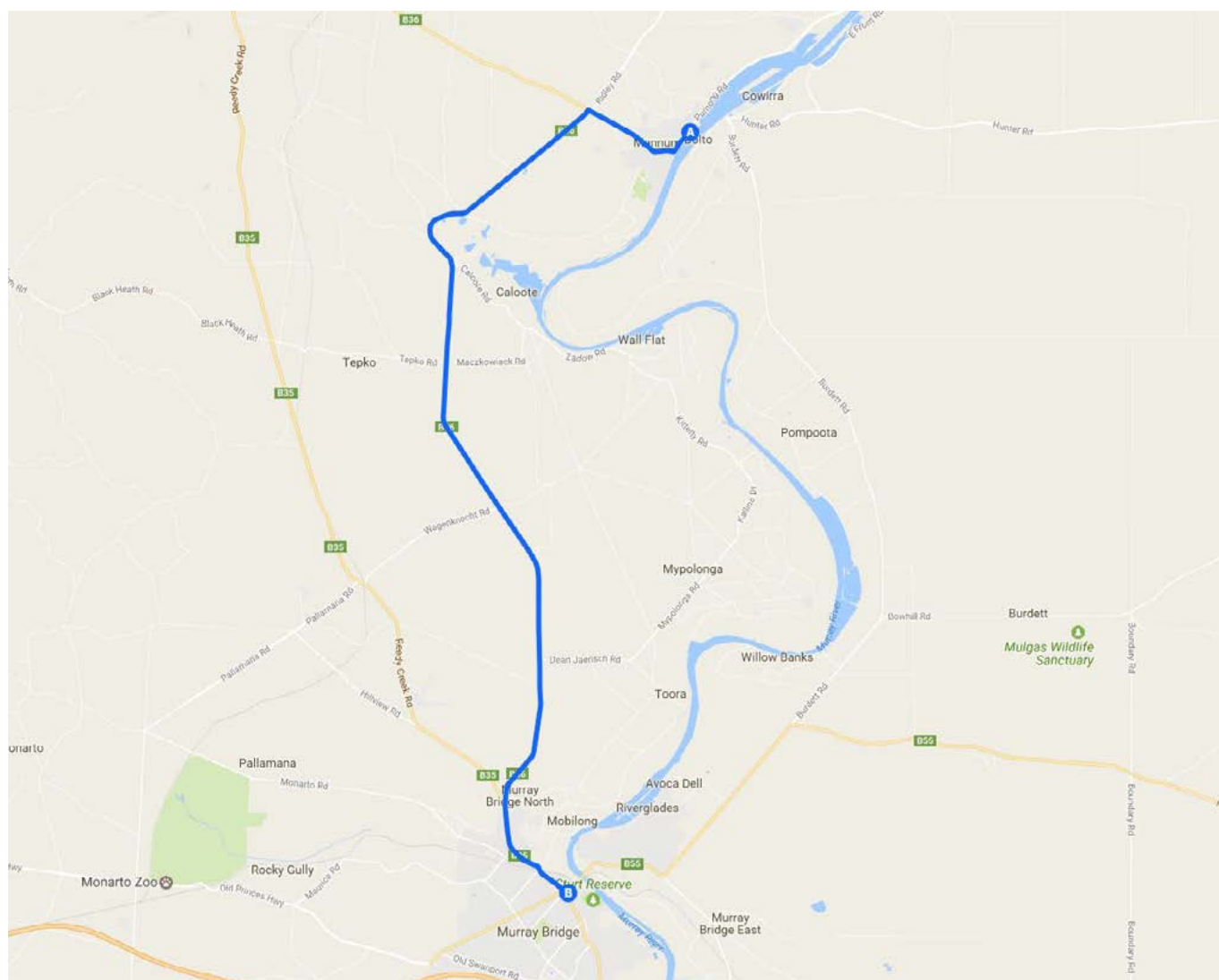


## 7. Mannum

MANNUM		
LOCATION	AM (APPROX.)	PM (APPROX.)
MANNUM - Arnold Park, Randell Street	8:00	4:20
MANNUM - Community Centre Car Park, Adelaide Road	8:05	4:17
CALOOTE turn off, Mannum Road	8:10	4:06
MYPOLONGA turn off, Mannum Road	8:20	3:56
MURRAY BRIDGE - St Joseph's School	8:30	3:15
MURRAY BRIDGE - Information Centre, South Terrace	8:35#	3:40
MURRAY BRIDGE - Unity College Senior Campus	8:45*	3:30*
MURRAY BRIDGE - Unity College Junior Campus	8:47*	3:35*

\* Operates School Days Only    # Service Connects to the LinkSA Murray Bridge – Mt Barker Service

Timetable current from 15 October 2017 and subject to change without notice – please check the LinkSA website for updates <http://linksa.com.au> or contact LinkSA Pty Ltd on (08) 8532 2633 for further information.





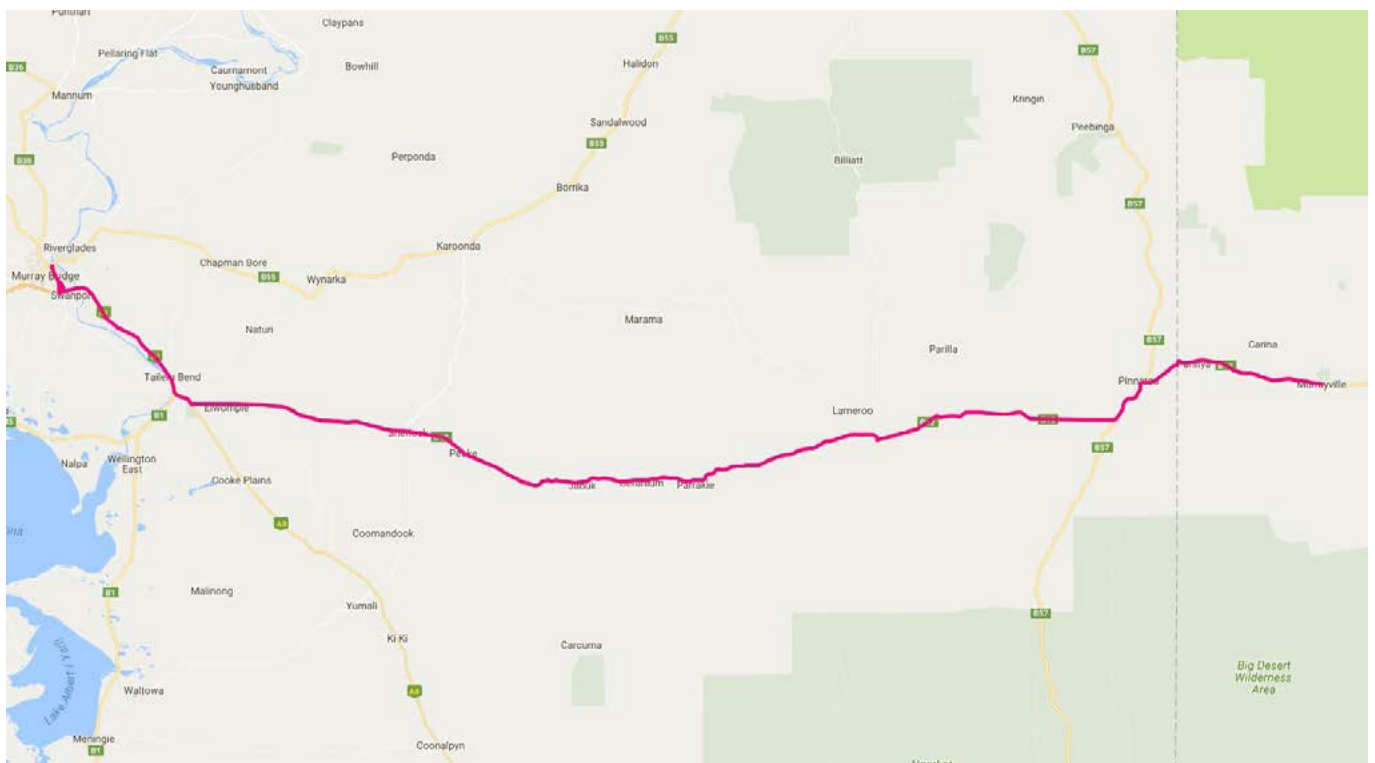
## 8. Murrayville (via Pinnaroo, Lamerook & Tailem Bend)

MURRAYVILLE (VIA PINNAROO, LAMEROO AND TAILEM BEND)		
LOCATION	AM (APPROX.)	PM (APPROX.)
MURRAYVILLE - Murrayville Hotel (SA Time), Mallee Highway	6:15*	5:50*
PINNAROO - BP Service Station, Mallee Highway	6:34*	5:30*
PARILLA - Railway Terrace	6:51*	5:12*
LAMEROO - Council Office, Railway Terrace North	7:01*	5:02*
PARRAKIE - Mallee Highway	7:19*	4:45*
GERANIUM - Community Store, Mallee Highway	7:25*	4:39*
JABUK - Mallee Highway	7:33*	4:33*
PEAKE - Mallee Highway	7:40*	4:26*
SHERLOCK - Mallee Highway	7:50*	4:16*
MOORLANDS - Mallee Highway	8:00*	4:06*
TAILEM BEND - Tailem Bend Hall, Railway Terrace	8:12	3:55
MURRAY BRIDGE - Unity College Junior Campus	8:32	3:40

\* Stops serviced by booking only

During school holidays this service operates on Wednesday and Friday only.

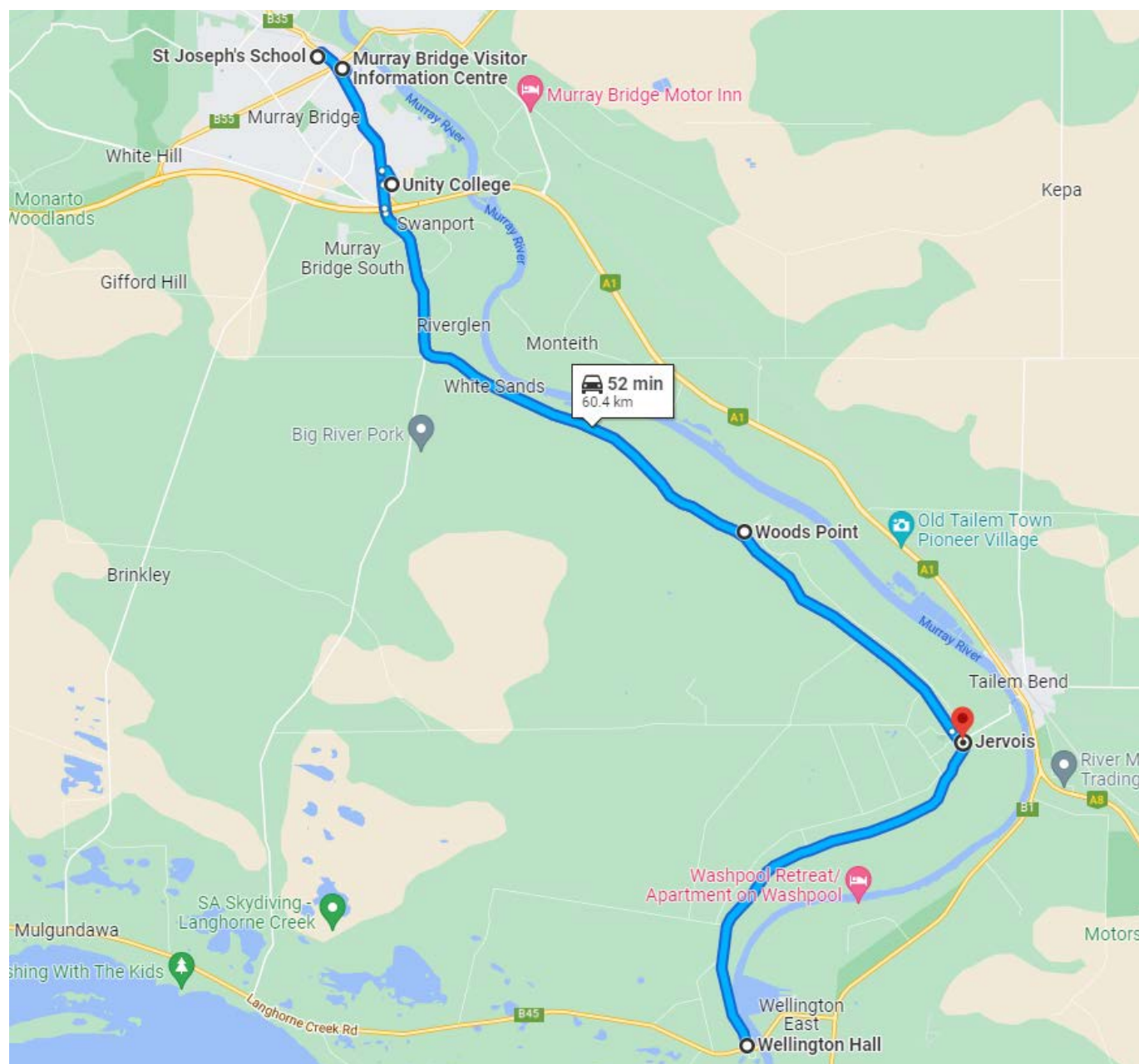
Timetable effective 16 October 2017 and subject to change without notice - please check the LinkSA website for updates <http://linksa.com.au> or contact LinkSA Pty Ltd on (08) 8532 2633 for further information.



## 9. Wellington (via Jervois & Woods Point)

WELLINGTON (VIA JERVOIS & WOODS POINT)		
LOCATION	AM (APPROX.)	PM (APPROX.)
WELLINGTON - Wellington Hall, Jervois Road	7:50	4:10
JERVOIS - Bus Stop, Jervois Road	8:05	3:55
WOODS POINT - Bus Stop, Jervois Road	8:10	3:50
MURRAY BRIDGE - Unity College Senior Campus	8:30	3:40

Timetable current from 24 July 2017 and subject to change without notice – please check the LinkSA website for updates <http://linksa.com.au> or contact LinkSA Pty Ltd on (08) 8532 2633 for further information.



## Unity College Bus Services

Unity College offers three bus services to and from Unity College.

ROUTE	DRIVER	CONTACT DETAILS
<b>1. KAROONDA</b>	Barry Grinter	0491 112 146
<b>2. MOUNT PLEASANT</b>	Brett Presland	0491 150 315
<b>3. NILDOTTIE</b>	Graeme Mann	0491 177 308

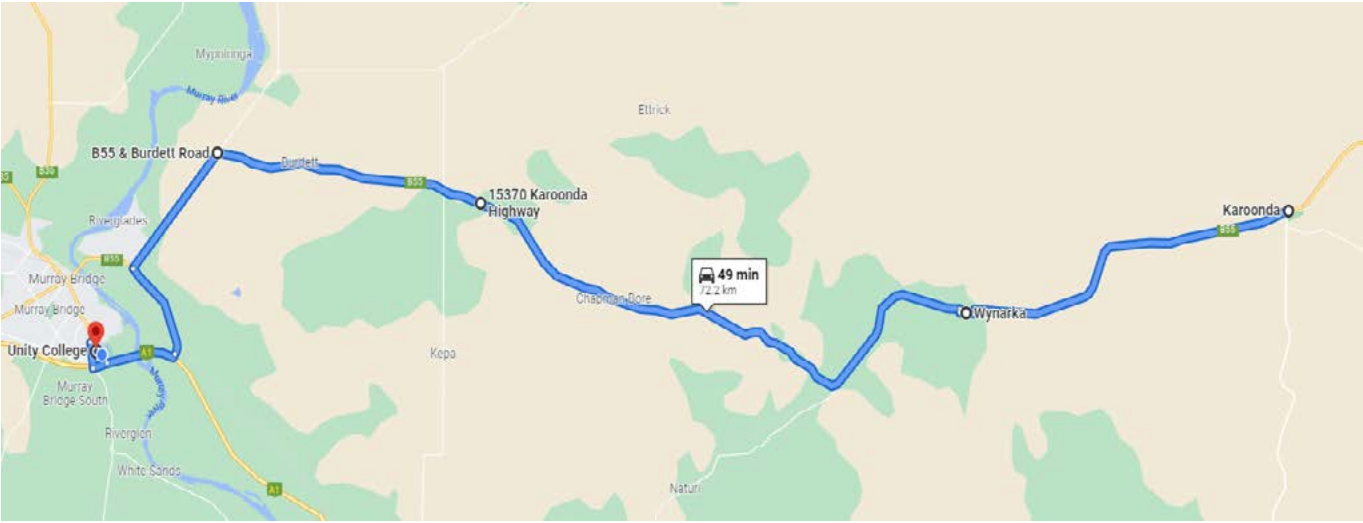
1. There is a cost attached to these services of \$4 per trip (up to a maximum of \$200 per term).
2. Should a student NOT require the bus due to illness or other reasons please contact the driver prior to the commencement of the run.
3. Subject to the time required to complete the trip, Unity College may alter the departure and arrival times. We are receiving a number of inquiries regarding this service so additional pickups will affect the duration of the trip.
4. Times listed are estimates. Please ensure you arrive to your stop a minimum of 5 mins prior to the scheduled arrival of your bus.
5. Times listed are subject to change. Any significant changes will be communicated as required.

For more information about this bus service, please contact Mr Michael Obst, Unity College Business Manager via [mobst@unitycollege.sa.edu.au](mailto:mobst@unitycollege.sa.edu.au) or call 8532 0100.

1. Karoonda

KAROONDA - AM TIMETABLE	
LOCATION	AM (APPROX.)
Karoonda (Carpark adjacent 'The Big Ram')	7:32
Wynarka (Cnr Moorlands Rd & Karoonda Highway)	7:47
15370 Karoonda Highway	8:07
Cnr Loddon Road & Mitchell Ave	8:22
5413 Old Princes Highway	8:25
Unity College	8:35

KAROONDA - PM TIMETABLE	
LOCATION	PM (APPROX.)
Unity College	3:25
5413 Old Princes Highway	3:40
Cnr Loddon Road & Mitchell Ave	3:38
15370 Karoonda Highway	3:53
Wynarka (Cnr Moorlands Road & Karoonda Highway)	4:13
Karoonda (Carpark adjacent 'The Big Ram')	4:28

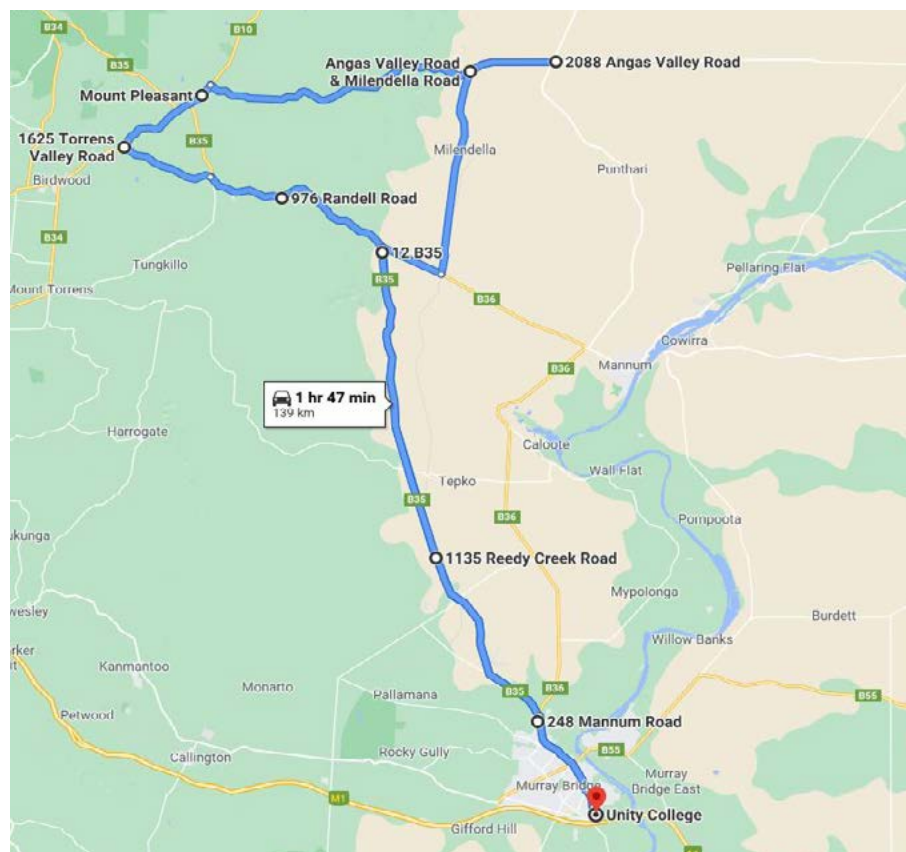




## 2. Mount Pleasant

MOUNT PLEASANT - AM TIMETABLE	
LOCATION	AM (APPROX.)
976 Randell Road (Ayres Road Corner) - PM Stop Only	
Mount Pleasant - Show Ground Gate	7:23
Mount Pleasant (Post Office)	7:25
2088 Angas Valley Road (Thornby's)	7:43
Cnr Milendella & Angas Valley Roads (AM Only)	7:48
Palmer Lutheran Church (Reedy Creek Road)	8:00
Cnr Wagenknecht and Reedy Creek Roads, Pallamana	8:17
248 Mannum Road, Murray Bridge	8:25
Unity College	8:37

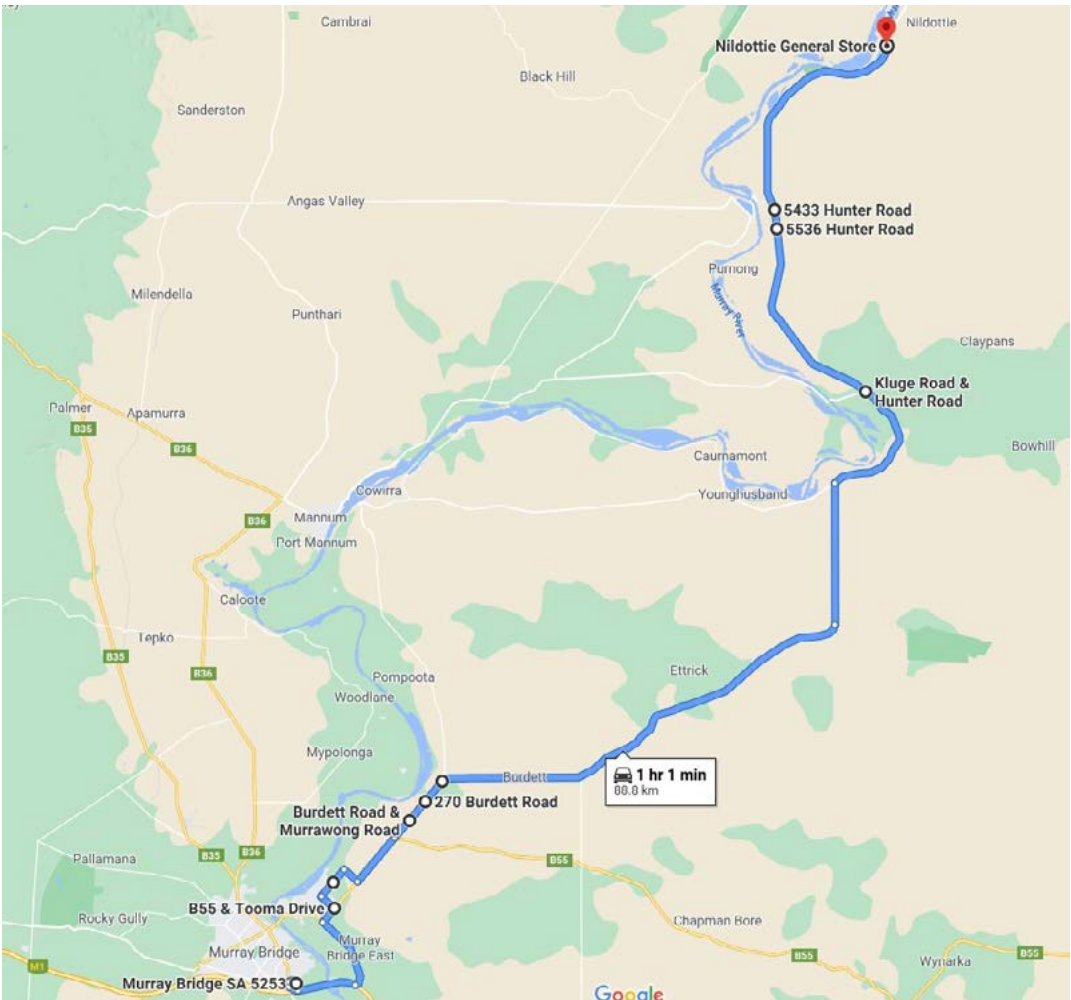
MOUNT PLEASANT - PM TIMETABLE	
LOCATION	PM (APPROX.)
Unity College	3:25
248 Mannum Road, Murray Bridge	3:35
Cnr Pallamana and Reedy Creek Roads, Pallamana	3:40
Palmer Lutheran Church (Reedy Creek Road)	3:55
976 Randell Road (Ayres Road Corner)	4:03
Mount Pleasant -Show Ground Gate	4:13
Mount Pleasant (Post Office)	4:15
Sanderston (PM Stop Only)	4:30
2088 Angas Valley Road (Thornby's)	4:33



3. Nildottie

NILDOTTIE - AM TIMETABLE	
LOCATION	AM (APPROX.)
Nildottie	7:20
Nildottie - Stop 2	7:25
5536 Hunter Road	7:38
Cnr Kluge Road & Hunter Road	7:47
Bowhill Hall - 7287 Hunter Road	7:51
Crn of Bowhill and Burdett Roads	8:15
Crn Murrawong & Burdett Roads	8:18
Unity College	8:38

NILDOTTIE - PM TIMETABLE	
LOCATION	PM (APPROX.)
Unity College	3:20
Crn Murrawong & Burdett Road	3:40
169 Burdett Road (PM Only)	3:41
Crn of Bowhill and Burdett Road	3:44
Bowhill Hall - 7287 Hunter Road	4:08
Crn Kluge Road & Hunter Road	4:12
5536 Hunter Road	4:21
Nildottie - Stop 2	4:32
Nildottie	4:34



## Department for Education Runs

The Department for Education (DfE) transports students from outlying areas into Murray Bridge and delivers them to the nearest government school, otherwise known as your “school of right”.

To travel on the DfE transport system there are certain criteria that needs to be met to determine eligibility:

1. Students must reside more than 5 kms away from the nearest government school.
2. DfE will only provide transport to the nearest government school. (if, for example, you had primary aged students and lived on the other side of Mypolonga, the nearest primary school would obviously be Mypolonga. Students would therefore be ineligible. DfE may however still grant approval IF there were spare sets available on the bus).
3. Bus routes are reviewed by DfE from time to time and they may change as a result of the review.
4. Written approval must be gained to travel on a DfE bus. (Application forms are available from the College. These forms are normally distributed to parents in November of each year.)
5. Secondary students attending Unity College, who are eligible to travel, are automatically approved.
6. Approvals are reviewed annually by the school who manages the service. The school will notify parents if they are approved or not – usually early in January.

There are connecting buses in Murray Bridge that transport the students from the “School of Right” to the Murray Bridge High School. Unity students are transported to and from the High School via ‘link buses’ both morning and night. There is a charge for this service and parents are required to contact LinkSA for more information.

DfE buses service the following areas and if you have any queries or concerns, please contact the coordinating school of your family’s bus run.

## Department for Education Bus Routes

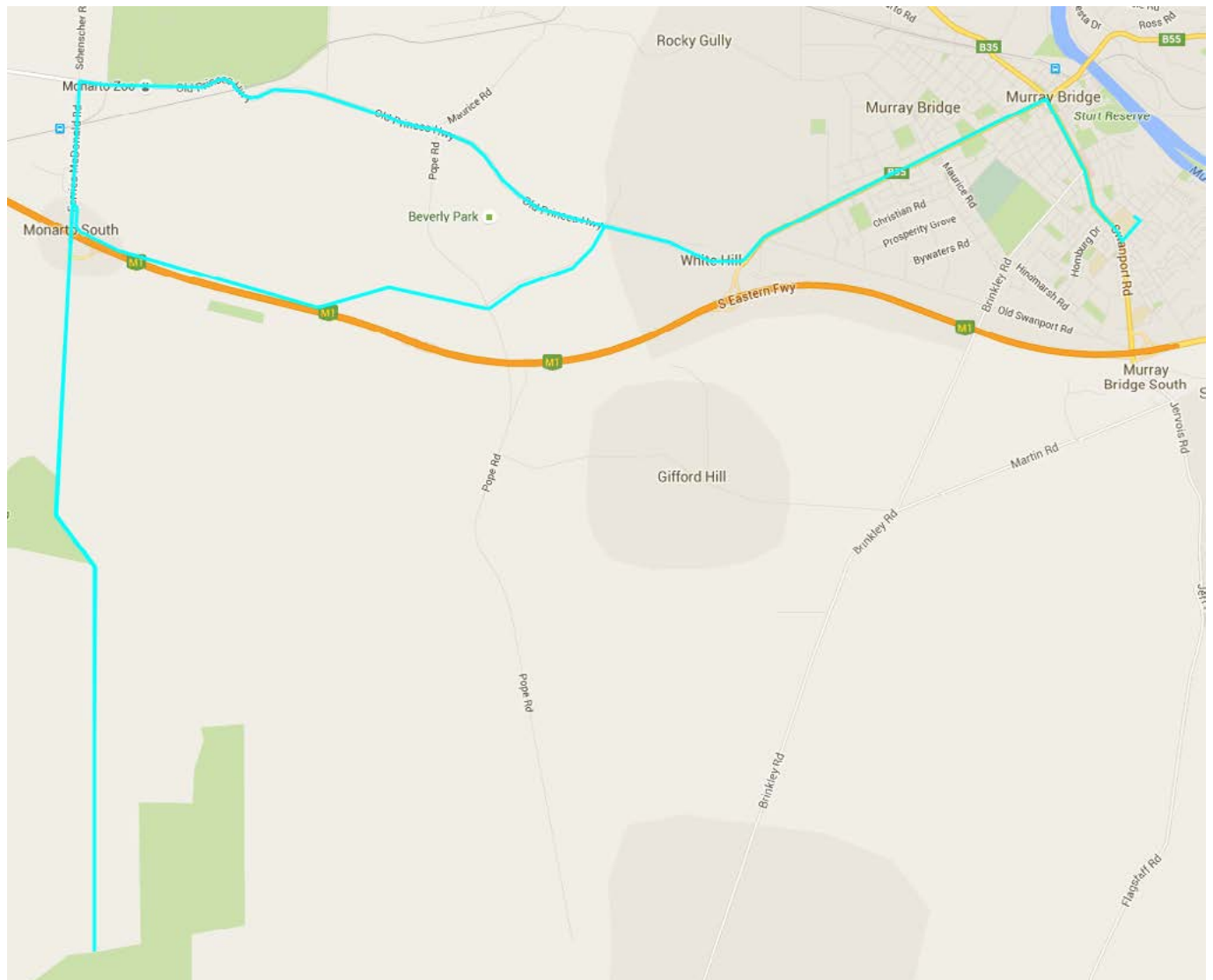
ROUTE	CONTACT
<b>1. MONARTO</b>	Murray Bridge High School, Bryce Gillett, 8531 9500
<b>2. MYPOLONGA / WALL FLAT</b>	
<b>3. POMPOOTA</b>	
<b>4. PALLAMANA</b>	
<b>5. BOWHILL</b>	
<b>MURRAY BRIDGE TOWN SERVICE</b>	LinkSA refer contracted section for details

\*\*Please Note: Routes are subject to change.

## 1. Monarto

For further information, please contact: Murray Bridge High School, Bryce Gillett, 8531 9500

\*\*Bus route subject to change without notice

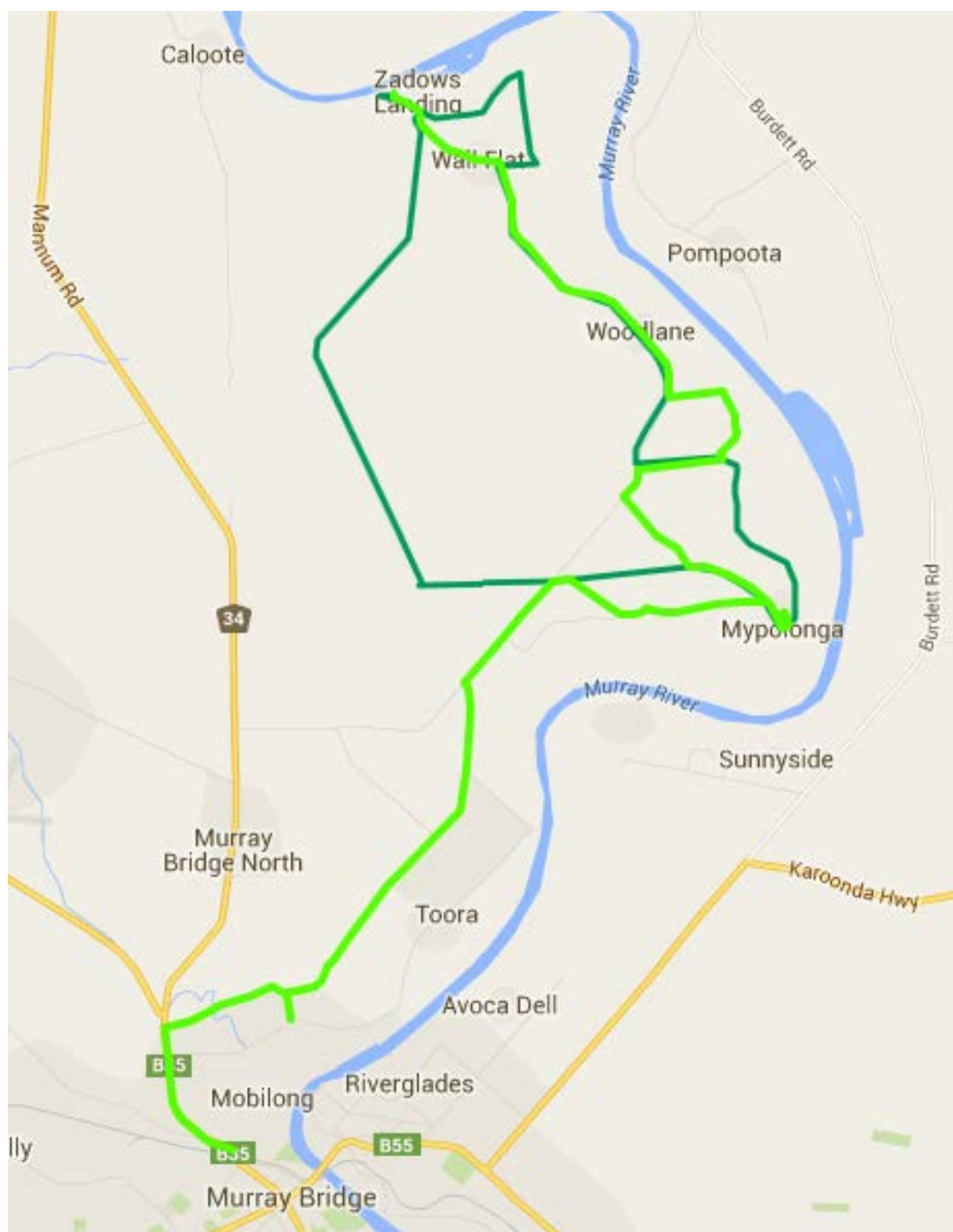




## 2. Mypolonga / Wall Flat

For further information, please contact: Murray Bridge High School, Bryce Gillett, 8531 9500

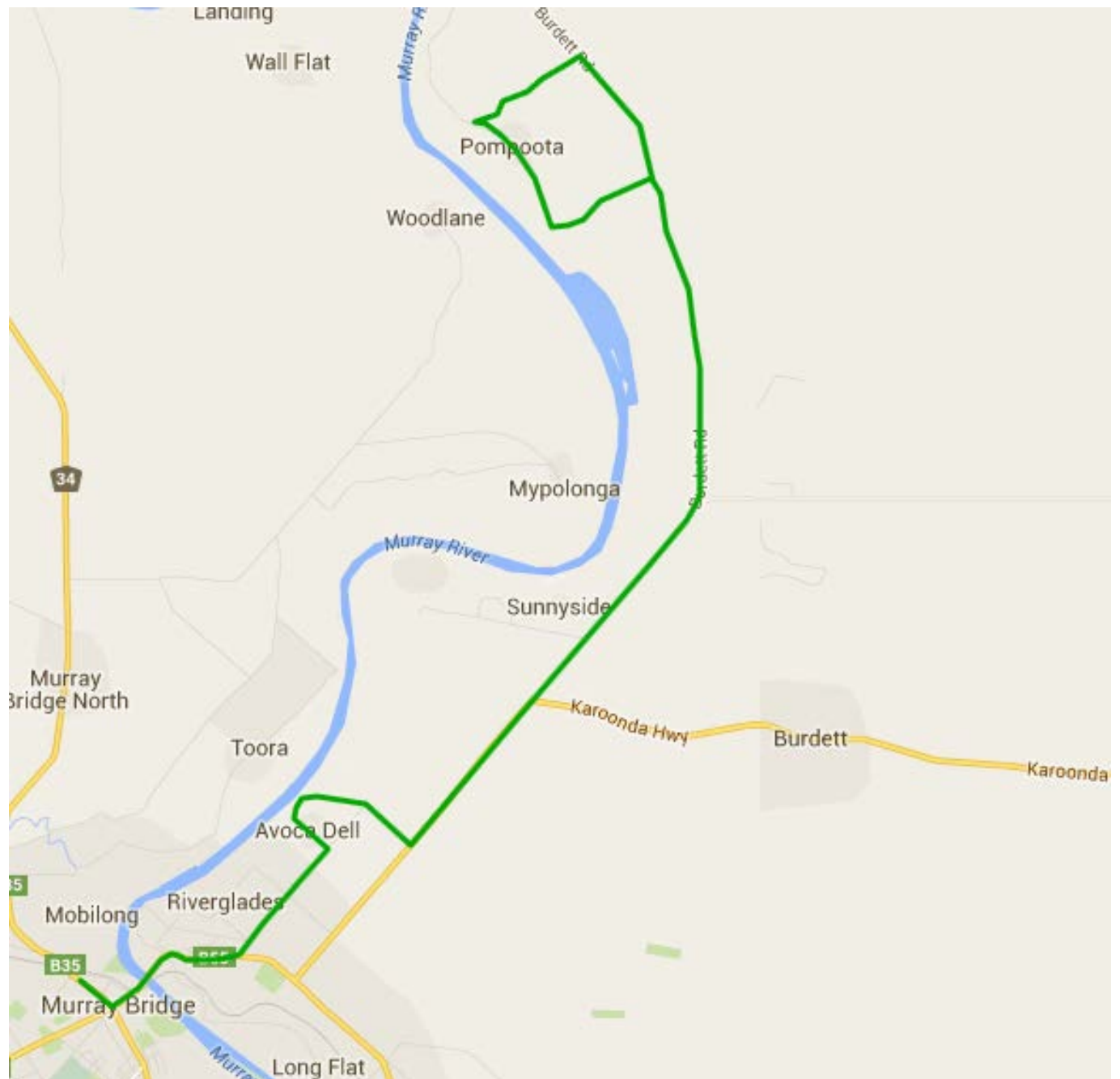
\*\*Bus route subject to change without notice



### 3. Pompoota

For further information, please contact: Murray Bridge High School, Bryce Gillett, 8531 9500

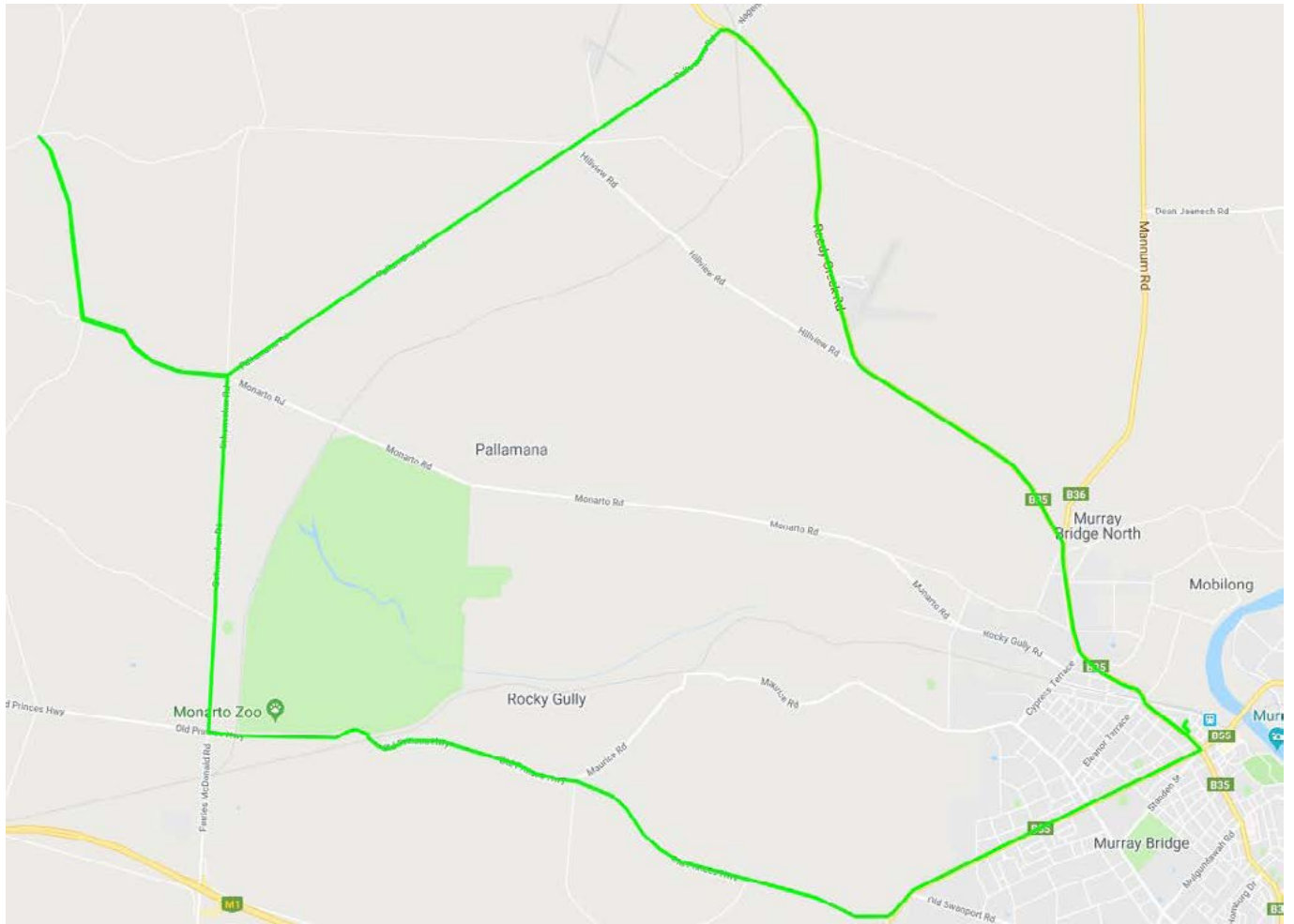
\*\*Bus route subject to change without notice



## 4. Pallamana

For further information, please contact: Murray Bridge High School, Bryce Gillett, 8531 9500

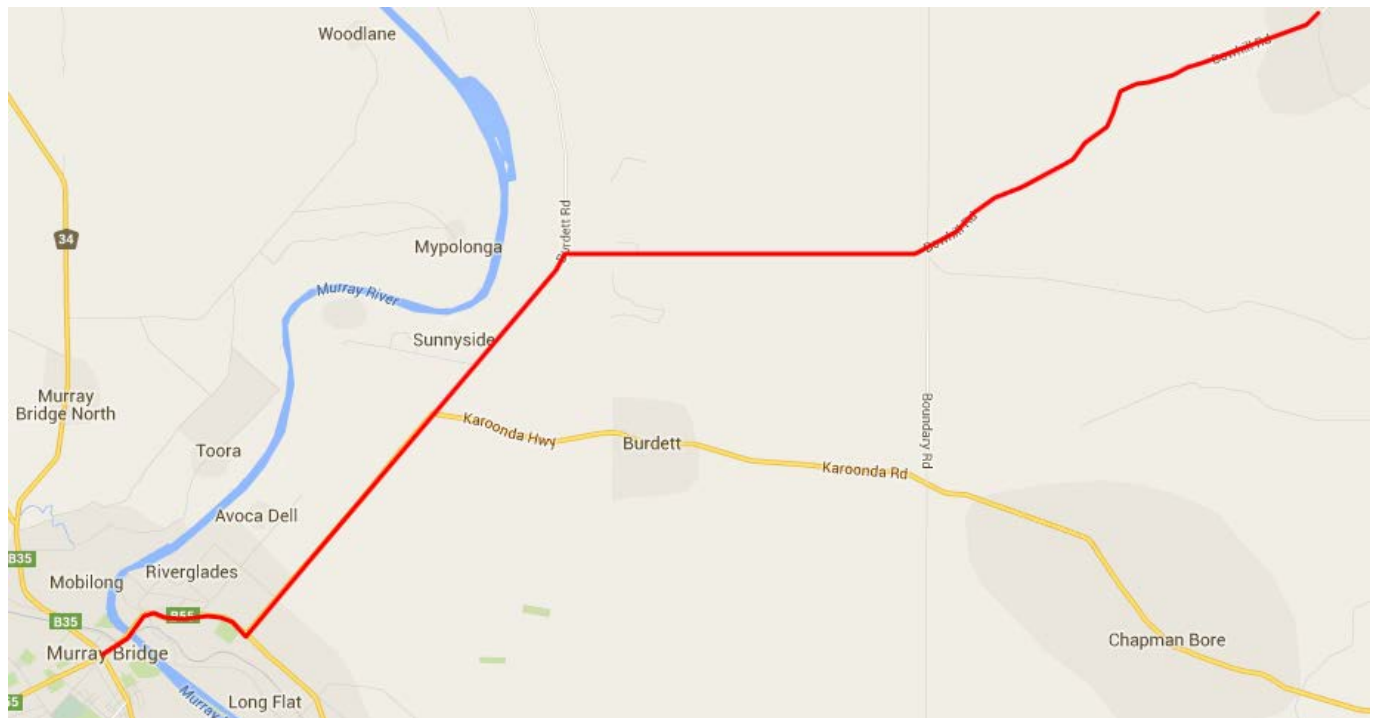
\*\*Bus route subject to change without notice



## 5. Bow Hill

For further information, please contact: Murray Bridge High School, Bryce Gillett, 8531 9500

\*\*Bus route subject to change without notice





# Safety Issues

## RATIONALE

It is a right of all students and drivers to be able to travel to and from school safely. Students are therefore required to adhere to the following rules. We must ensure that the bus driver's concentration is not disrupted and consequently any action, physical or verbal, threatening this concentration must be prevented.

## EXPECTATIONS OF STUDENTS

1. Wait safely for the bus:
  - ✦ Follow the instructions of the teachers at the school bus stops.
  - ✦ Keep well back from the road.
  - ✦ Do not play ball games or run around at the bus stop.
  - ✦ Do not wander away from the bus stop.
  - ✦ Line up in a single line before boarding the bus. The front person should be one (1) metre from the kerb. Do not come to the kerb while the bus is still moving.
2. Travel safely on the bus:
  - ✦ Sit in your seat; keep bags under the seat, not in the aisle.
  - ✦ Respect the needs, comfort and property of other passengers.
  - ✦ Do not throw any articles inside or out of the bus.
  - ✦ Keep your whole body in the bus.
  - ✦ Speak quietly and politely to each other.
  - ✦ Respect the bus property by not tampering with, marking or damaging it in any way.
  - ✦ Do not distract the driver – the bus driver has to drive in safety.
  - ✦ Listen to, and follow the driver's instructions.
  - ✦ Remain in your seat until the bus reaches your set down point.
  - ✦ When the bus has completely stopped, alight in a safe, orderly manner – students must get on and off the bus at their designated stop.
  - ✦ Do not tamper with fire extinguishers. Parents will be charged for refill or damage to fire extinguishers. Parents will also be charged for damage to bus seats, windows etc.
3. Access to the bus:
  - ✦ Only students allocated to a particular bus run are permitted to travel on the bus. Students are unable to take friends home on the bus.
  - ✦ Students will only be permitted to be collected or get off the bus at their designated bus stop.
4. Deal with issues appropriately:
  - ✦ Speak to the driver, a teacher or your parent/caregiver about any concerns.
  - ✦ Solve problems by talking them through calmly and quietly.
  - ✦ Inappropriate behaviour on buses will in the first instance result in consequences of having a written warning. Further infringement will lead to suspension from the bus for 2 to 5 days. This will occur with prior notification to parents.
  - ✦ If behaviour is severe and endangering other passenger and other road users, student will be removed immediately after contacting parents, and a period of suspension from the bus will be determined by the bus company.

## EXPECTATIONS OF PARENTS AND CAREGIVERS

1. Always leave and meet your students in a safe manner at the bus stop:
  - ✦ Be on time for the bus pick-up and drop-off.
  - ✦ Remind children of safety rules.
  - ✦ Regardless of convenience, always park your car on the bus stop side of the road away from bends, crests and corners.
  - ✦ Where practicable, your children should get out/in the car from the footpath, i.e. from the side furthest from the road.
  - ✦ Be aware of the Road Traffic Act which states that a person may not drive at a speed greater than 25 kilometres an hour when passing a bus that has stopped to allow children to board or alight.
  - ✦ Children should learn to wait until the bus has gone and they have clear vision of the road before crossing.
  - ✦ Notify the principal of any unsafe situations or practices.
  - ✦ Negotiate any changes to bus stops with the principal and driver.

## OTHER EXPECTATIONS

In addition to the safety issues outlined above, students travelling on Unity buses must:

1. Advise the driver or bus contractor in advance that they will not be travelling on the bus for any period of time.
2. Inform the driver in the morning if they will not be using the service in the afternoon.

## BUSHFIRE / NATURAL DISASTER / HAZARDOUS INCIDENT

The following processes are in place should there be an issue on any of the bus routes.

3. The CFS provides the College with communication daily that outlines the areas that will be in Total Fire Ban. We need to be aware of these bans and alert to any fires that could pose risk to our student travellers. Information is also provided on any incidents / fires that may impact bus routes.
4. If the CFS or SAPOL advise the College that a road or highway is blocked due to an unforeseen incident, we will keep all students at the College and provide appropriate supervision and assistance. Parents will be notified and suitable arrangements made. Students will be kept at the College until such time as they are collected by a parent/guardian (or their nominated adult) or we are advised that the route is safe to transverse.
5. If the bus driver was not notified of an incident and they are subsequently blocked along the route home, then the driver or College will contact all parents along the route and advise them that the students will be returned to the College to be looked after in an appropriate manner.

## SEAT BELTS

Seat belts are provided in the buses for the safety of all passengers. It is a government requirement, and a College expectation, that all passengers use them in the appropriate manner.



Education is the most powerful weapon which  
**YOU** can use to change the world. Nelson Mandela

Owl Drive, Murray Bridge  
PO Box 5141, Murray Bridge South  
South Australia 5253

t. 08 8532 0100  
e. [unity@unitycollege.sa.edu.au](mailto:unity@unitycollege.sa.edu.au)  
[www.unitycollege.sa.edu.au](http://www.unitycollege.sa.edu.au)

#**YOU**belong



*Updated January 2023*